

**ENGINEER OF RECORD VERIFY WALL CAN SUPPORT SUNSHADE LOADS:**

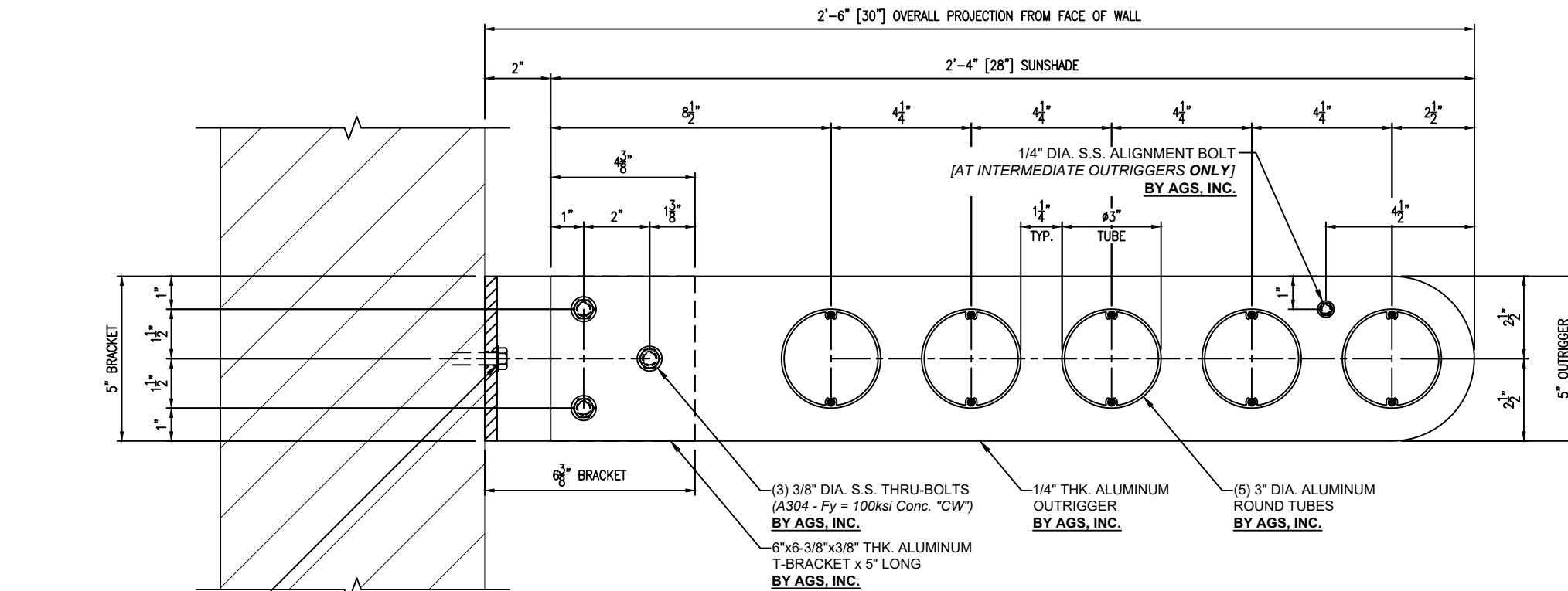
DESIGN LOAD: 57 psf

GROUND SNOW LOAD: 50 psf  
-See maps where these calculations do not apply.

WIND SPEED: 120 mph  
-See maps where these calculations do not apply.

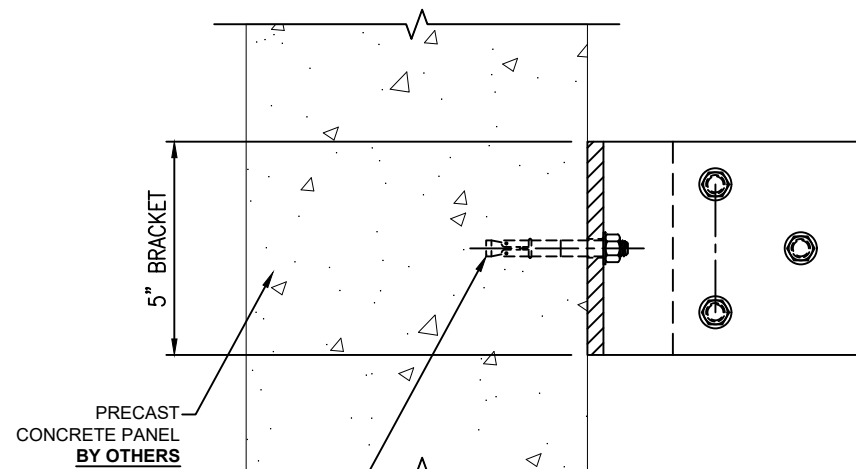
ANCHORAGE IS BASED ON 30" PROJECTION.

MAXIMUM LENGTH OF SUNSHADE: 60"



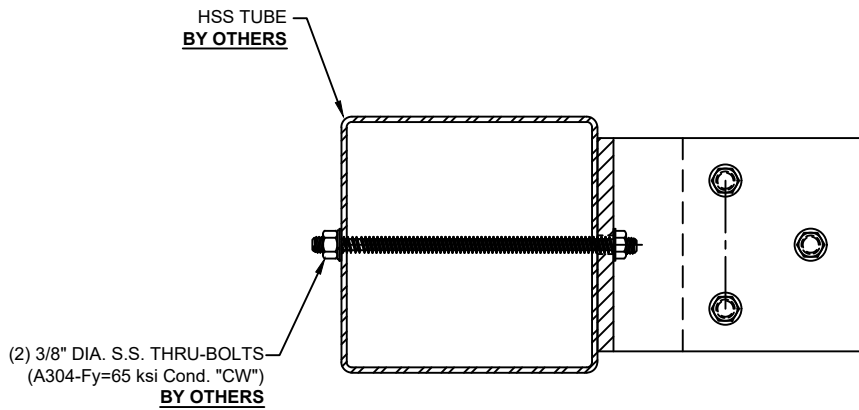
**SURFACE MOUNTED SUNSHADE**

S.S. BOLTS  
\*SEE ATTACHMENT HARDWARE  
OPTIONS PER ENGINEERING  
CALCULATIONS BELOW\*  
**BY OTHERS**



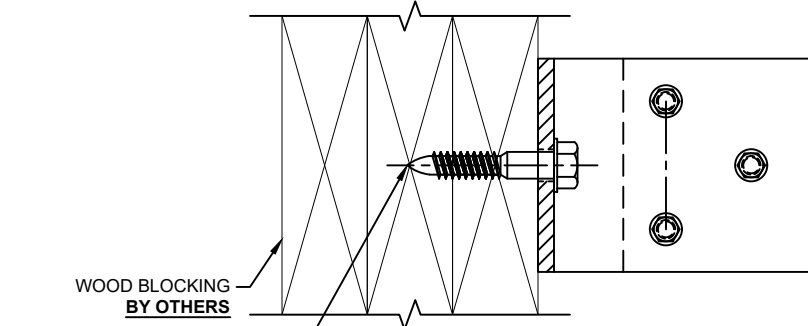
**PRECAST ATTACHMENT**

(2) 3/8\"/>



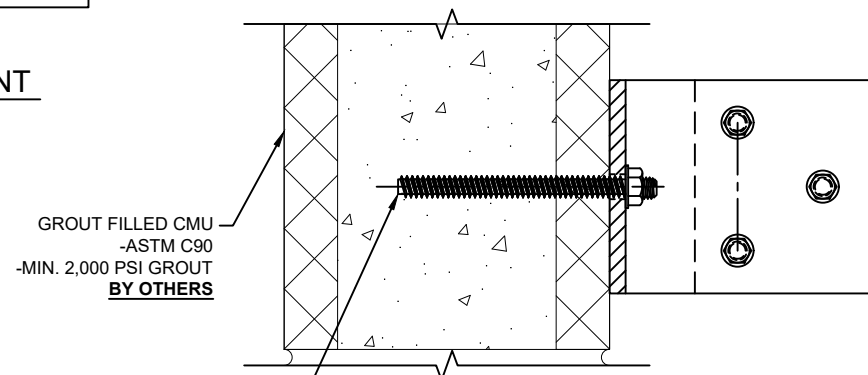
**HSS TUBE ATTACHMENT**

(2) 3/8\"/>



**WOOD BLOCKING ATTACHMENT**

(2) 5/8\"/>



**GROUT FILLED CMU ATTACHMENT**

(2) 1/2\"/>

**HERCULES QUICK SHIP**

5	BY	DATE
4		
3		
2		
1	REV. NO.	

**AGS Inc.**  
22442 S. Fey Drive  
Frankfort, IL 60423  
Ph: (708) 479-9458 Fax: (708) 479-9478  
www.agsshadec.com

**Architectural Grilles & Sunshades, Inc.**

PROJECT NAME: \_\_\_\_\_  
LOCATION: \_\_\_\_\_  
ARCHITECT: \_\_\_\_\_  
CONTRACTOR: \_\_\_\_\_  
REPRESENTATIVE: \_\_\_\_\_  
AGS INC. PROJECT MANAGER: \_\_\_\_\_

SHEET NAME:  
**SUNSHADE SECTION SHEET**

JOB NUMBER: \_\_\_\_\_

FINISH: \_\_\_\_\_

SCALE: 6" = 1'-0"  
DRAWN BY: **JRW** DATE: \_\_\_\_\_  
SHEET NO.: **01-02**

**ENGINEER OF RECORD VERIFY WALL CAN SUPPORT SUNSHADE LOADS:**

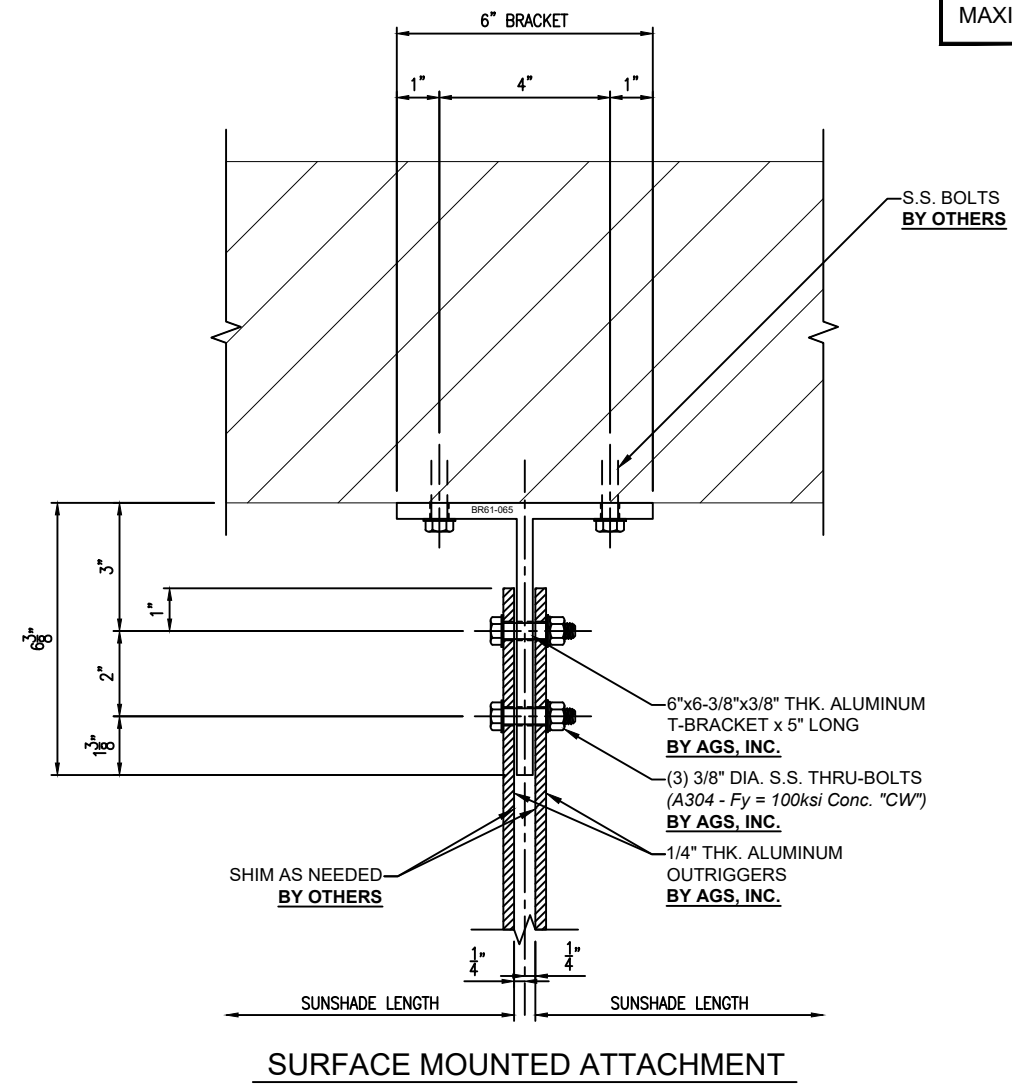
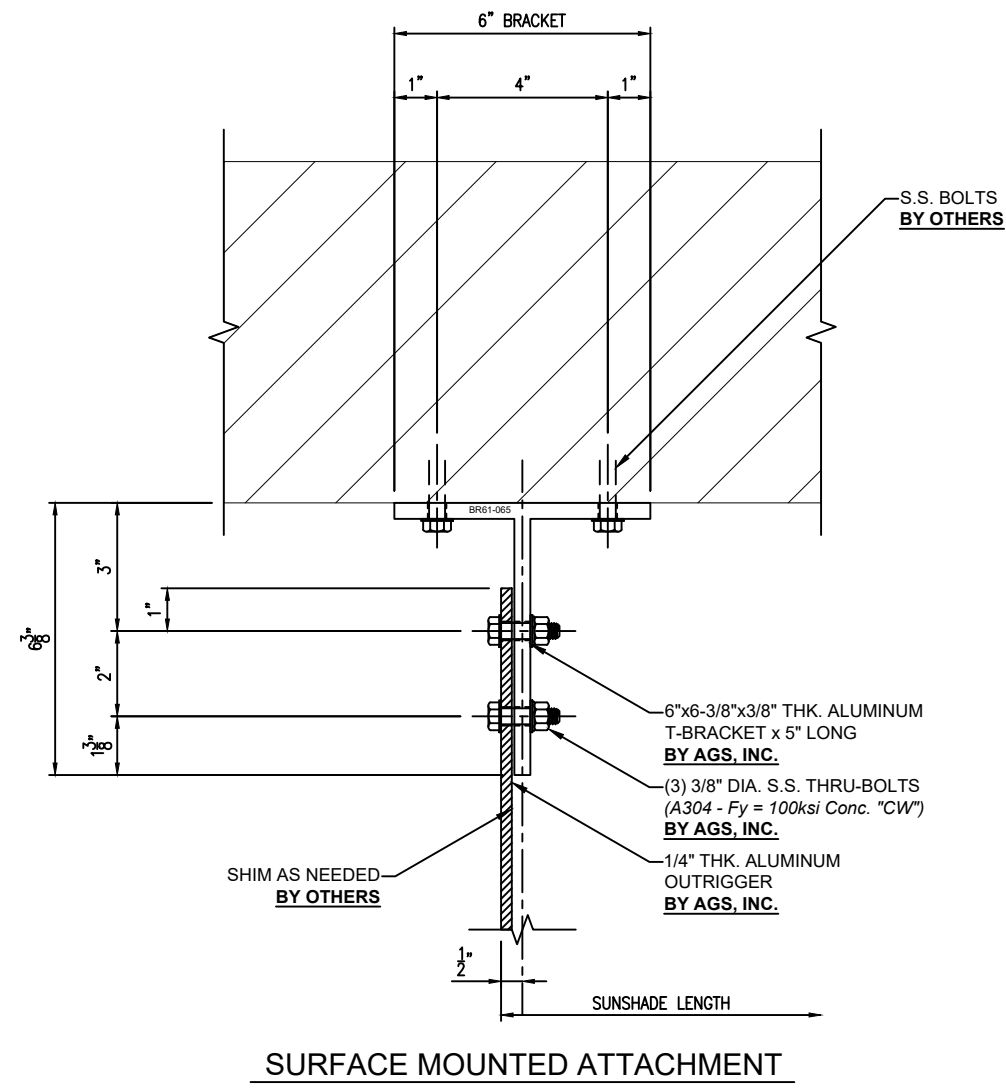
DESIGN LOAD: 57 psf

GROUND SNOW LOAD: 50 psf  
*-See maps where these calculations do not apply.*

WIND SPEED: 120 mph  
*-See maps where these calculations do not apply.*

ANCHORAGE IS BASED ON 30" PROJECTION.

MAXIMUM LENGTH OF SUNSHADE: 60"



5						BY
4						
3						
2						
1						
	REV. NO.		DATE			

**AGS Inc.**  
 22442 S. Fey Drive  
 Frankfort, IL 60423  
 Ph: (708) 479-9458 Fax: (708) 479-9478  
 www.agsshadec.com

**Architectural Grilles & Sunshades, Inc.**

PROJECT NAME:  
 LOCATION:  
 ARCHITECT:  
 LOCATION:  
 CONTRACTOR:  
 LOCATION:  
 REPRESENTATIVE:  
 LOCATION:  
 AGS INC. PROJECT MANAGER:

SHEET NAME:  
**ATTACHMENT  
 DETAIL  
 SHEET**

JOB NUMBER

FINISH

SCALE: 6" = 1'-0" DATE  
 DRAWN BY: JRW SHEET NO.: 02-02