

# FRACTION / DECIMAL / METRIC CONVERSION CHART

| Fractions  | Decimal      | Millimeters   |
|------------|--------------|---------------|
| 1/64       | 0.0156       | 0.396         |
| 1/32       | 0.0312       | 0.793         |
| 3/64       | 0.0469       | 1.190         |
| 1/16       | 0.0625       | 1.587         |
| 5/64       | 0.0781       | 1.984         |
| 3/32       | 0.0937       | 2.381         |
| 7/64       | 0.1094       | 2.778         |
| <b>1/8</b> | <b>0.125</b> | <b>3.175</b>  |
| 9/64       | 0.1406       | 3.571         |
| 5/32       | 0.1562       | 3.968         |
| 11/64      | 0.1719       | 4.365         |
| 3/16       | 0.1875       | 4.762         |
| 13/64      | 0.2031       | 5.159         |
| 7/32       | 0.2187       | 5.556         |
| 15/64      | 0.2344       | 5.953         |
| <b>1/4</b> | <b>0.250</b> | <b>6.350</b>  |
| 17/64      | 0.2656       | 6.746         |
| 9/32       | 0.2812       | 7.143         |
| 19/64      | 0.2969       | 7.540         |
| 5/16       | 0.3125       | 7.937         |
| 21/64      | 0.3281       | 8.334         |
| 11/32      | 0.3437       | 8.731         |
| 23/64      | 0.3594       | 9.128         |
| <b>3/8</b> | <b>0.375</b> | <b>9.525</b>  |
| 25/64      | 0.3906       | 9.921         |
| 13/32      | 0.4062       | 10.318        |
| 27/64      | 0.4219       | 10.715        |
| 7/16       | 0.4375       | 11.112        |
| 29/64      | 0.4531       | 11.509        |
| 15/32      | 0.4687       | 11.906        |
| 31/64      | 0.4844       | 12.303        |
| <b>1/2</b> | <b>0.500</b> | <b>12.700</b> |

| Fractions  | Decimal       | Millimeters   |
|------------|---------------|---------------|
| 33/64      | 0.5156        | 13.096        |
| 17/32      | 0.5312        | 13.493        |
| 35/64      | 0.5469        | 13.890        |
| 9/16       | 0.5625        | 14.287        |
| 37/64      | 0.5781        | 14.684        |
| 19/32      | 0.5937        | 15.081        |
| 39/64      | 0.6094        | 15.478        |
| <b>5/8</b> | <b>0.6250</b> | <b>15.875</b> |
| 41/64      | 0.6406        | 16.271        |
| 21/32      | 0.6562        | 16.668        |
| 43/64      | 0.6719        | 17.065        |
| 11/16      | 0.6875        | 17.462        |
| 45/64      | 0.7031        | 17.859        |
| 23/32      | 0.7187        | 18.256        |
| 47/64      | 0.7344        | 18.653        |
| <b>3/4</b> | <b>0.7500</b> | <b>19.050</b> |
| 49/64      | 0.7656        | 19.446        |
| 25/32      | 0.7812        | 19.843        |
| 51/64      | 0.7969        | 20.240        |
| 13/16      | 0.8125        | 20.637        |
| 53/64      | 0.8281        | 21.034        |
| 27/32      | 0.8437        | 21.431        |
| 55/64      | 0.8594        | 21.828        |
| <b>7/8</b> | <b>0.8750</b> | <b>22.225</b> |
| 57/64      | 0.8906        | 22.621        |
| 29/32      | 0.9062        | 23.018        |
| 59/64      | 0.9219        | 23.415        |
| 15/16      | 0.9375        | 23.812        |
| 61/64      | 0.9531        | 24.209        |
| 31/32      | 0.9687        | 24.606        |
| 63/64      | 0.9844        | 25.003        |
| <b>1</b>   | <b>1.0000</b> | <b>25.400</b> |



**Sunshades • Vertical Sunshades • Trellises • Grilles**  
**• Light shelves • Custom Cut Aluminum Panels**  
**• Equipment Screens/Screening Systems**

**Infills**



Round Tube  
1" – 6"



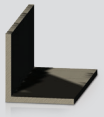
Flat Bar  
3/4" – 14"



"Z" Blade  
4" – 6"



Egg Crate



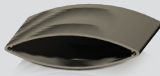
Angle



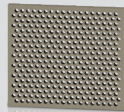
Rectangle Tube  
1" x 1" – 1" x 8"  
2" x 2" – 2" x 14"



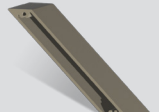
Square Tube  
1" x 1" – 8" x 8"



Airfoil Blades  
3" – 24"



Perforated  
Aluminum

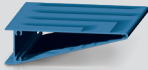


6" Planar Blade

**Fascias**



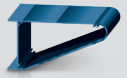
PT# F-020



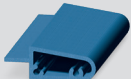
PT# F-030



PT# F-050



PT# F-048



PT# F-005



PT# F-040



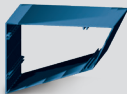
PT# F-025



PT# F-045



PT# F-049



PT# F-065



PT# F-060



PT# F-010



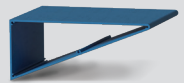
PT# F-077



PT# HR-055



PT# HR-040



PT# F-052

\*We have hundreds of custom AGS dies. Please contact us at 708.479.9458 to find out more about our broad selection.



**AGS INC**  
Architectural Grilles & Sunshades

22442 Fey Drive, Frankfort, IL 60423  
708.479.9458 | agsshade.com