



If you are working on a project and you need shades fast, we've got you covered.

Architectural Grilles & Sunshades now offers our 3 most popular sunshade models as a quick ship series.

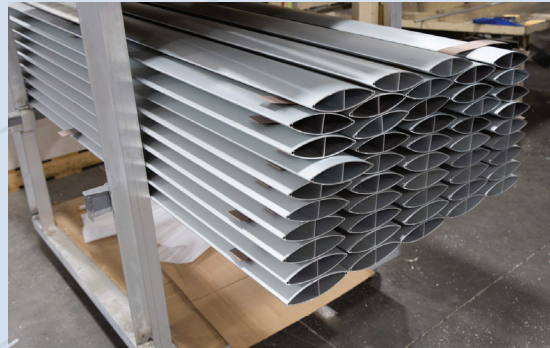
These Sunshade components are in stock and ready for fabrication and assembly.

Pre-engineered calculations are included based on parameters noted below. Project specific calculations are not included.

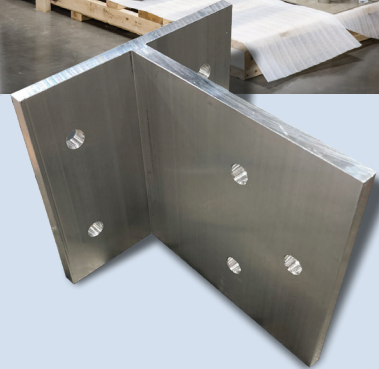
Quick Ship Series Details

- 4-5 week lead time
- Fabrication sizes required at order placement
- Clear Anodized or Mill Finish only
- 2 bracket options – 6" surface mount "T" bracket or storefront/curtainwall bracket
- Maximum sunshade span – 60"
- No substitutions
- 57 psf design load
- 50 psf ground snow load (see calculations for exceptions)
- 120 mph wind speed (see calculations for exceptions)

Please visit our website at agsshade.com for specifications and engineering calculations.



Our horizontal sunshades offer a unique architectural aesthetic, as well as limiting heat gain, preventing glare and enhancing daylighting. AGS sunshades provide the opportunity to distinguish your building, while greatly improving your work environment.

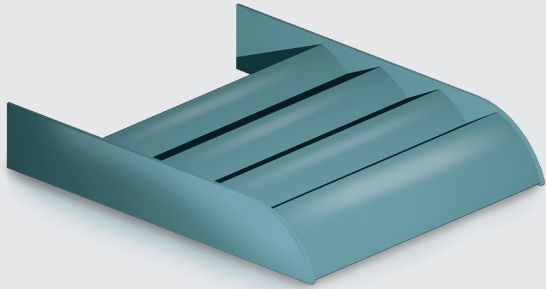


22442 Fey Drive, Frankfort, IL 60423
708.479.9458 | agsshade.com

Quick Ship Series Sunshades

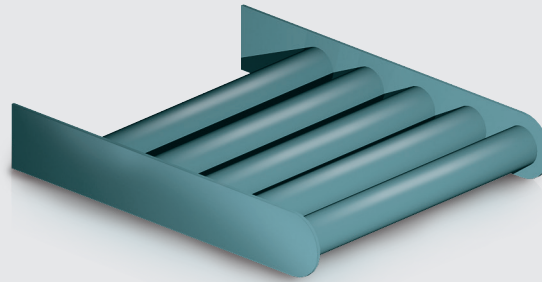
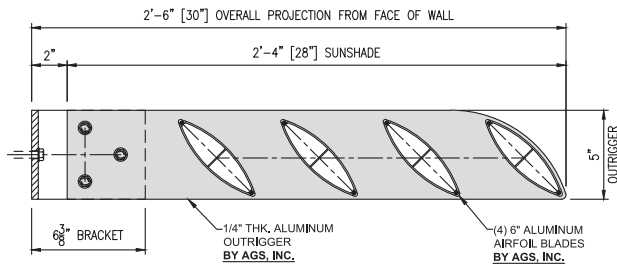
Fully fabricated sunshades shipped in under five weeks from order placement.





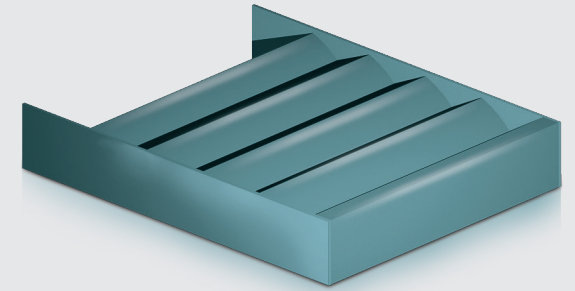
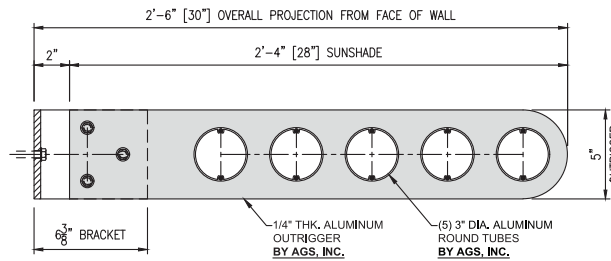
Kilkenny Sunshades

- 5" Curved Aluminum Outrigger
- (4) 6" Aluminum Airfoil Infill
- 30" Sunshade Projection
- Curtainwall, Storefront and Surface Mount Options Available



Hercules Sunshades

- 5" Aluminum Bullet Shaped Outrigger
- (5) 3" Round Aluminum Tube Infill
- 30" Sunshade Projection
- Curtainwall, Storefront and Surface Mount Options Available



Wexford Sunshades

- 5" Aluminum Rectangular Outrigger
- (4) 6" Aluminum Airfoil Infill with 5" Channel Fascia
- 30" Sunshade Projection
- Curtainwall, Storefront and Surface Mount Options Available

