

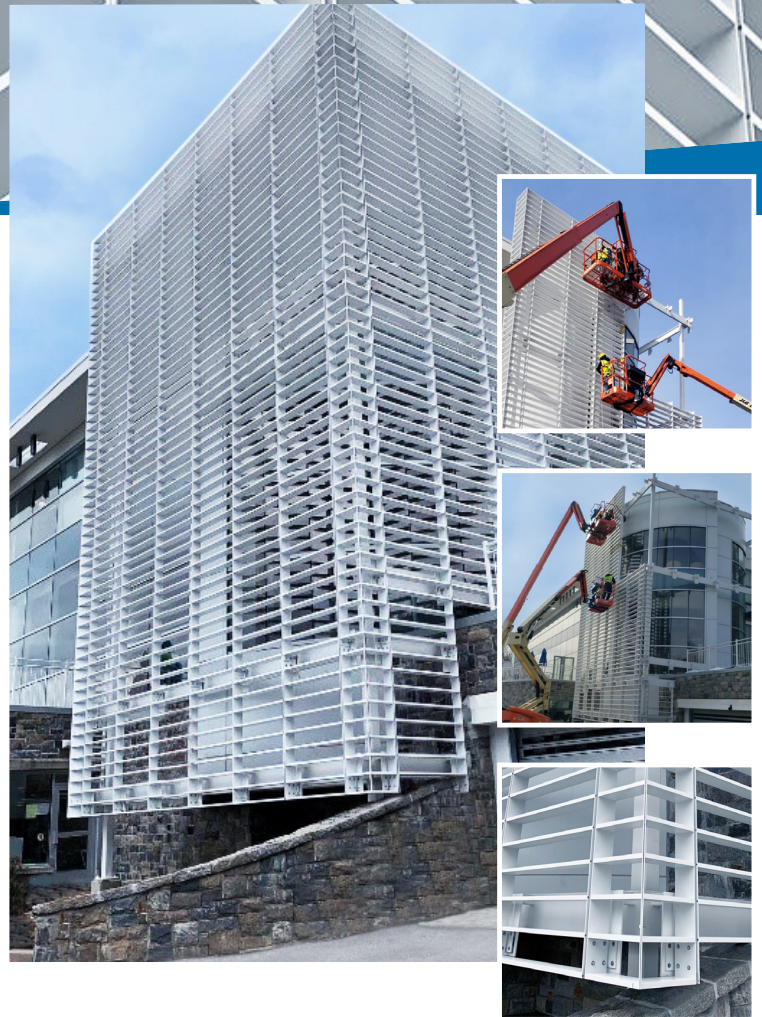


250 KISCO BMW Mt. Kisco, NY

250 Kisco BMW Sunshade Project

The 250 Kisco BMW project gave AGS the opportunity to provide the customer an engaging upgrade to the existing building. These sunshades wrap around curved curtainwall, adding to the aesthetic of the entrance while providing greater control of light passing through. The four-sided, full height sunshades consist of equally spaced 1" x 6" rectangular tubes spanning horizontally between ¼" vertical outriggers. Aluminum brackets are mounted to a full steel support frame. Each sunshade is secured in place by a fastened connection between the outriggers and brackets. Paying close attention to the spacing of the tubes and brackets, we achieved a consistent and visually appealing sunshade for the building façade.

— **JOE MOLONY** Project Manager
Architect: Sparc+



Job Specifications

Custom Vertical Sunshades using aluminum rectangular tube infill blades

22442 S. Fey Drive Frankfort, IL 60423

708.479.9458 ■ agsshade.com