

# SPAN CHARTS

FAÇADES, SUNSHADES, SCREENS AND MORE  
ARCHITECTURAL ELEMENTS

**Geolam**<sup>®</sup>

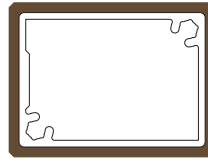
Architectural Eco-Technology



## Notes

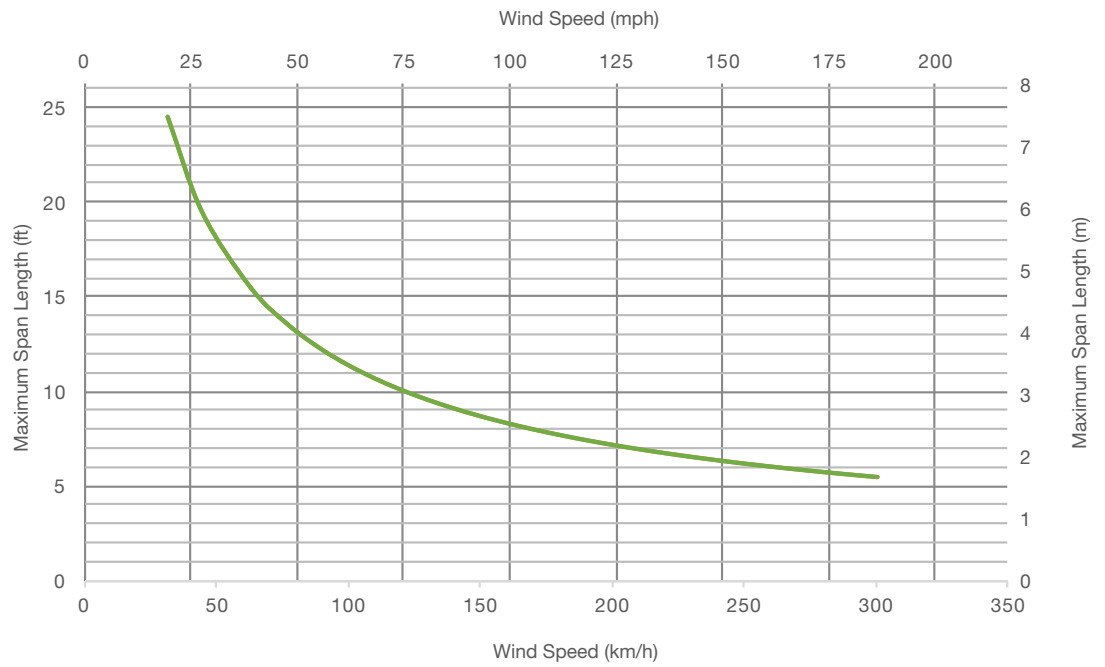
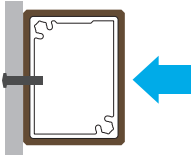
1. These charts account for wind loads only.
2. Based on a deflection limit of  $L/120$  (International Building Code 2015)
3. Suggested length for a cantilever installation is half of the length displayed on the chart.
4. These charts do not account for increased wind load at building corners. Suggested span length should be decreased in these areas. Contact a design professional for details.
5. Charts to be used for estimating purposes only. Contact a design professional to determine specific code/specification compliance.

# Soleo 6027

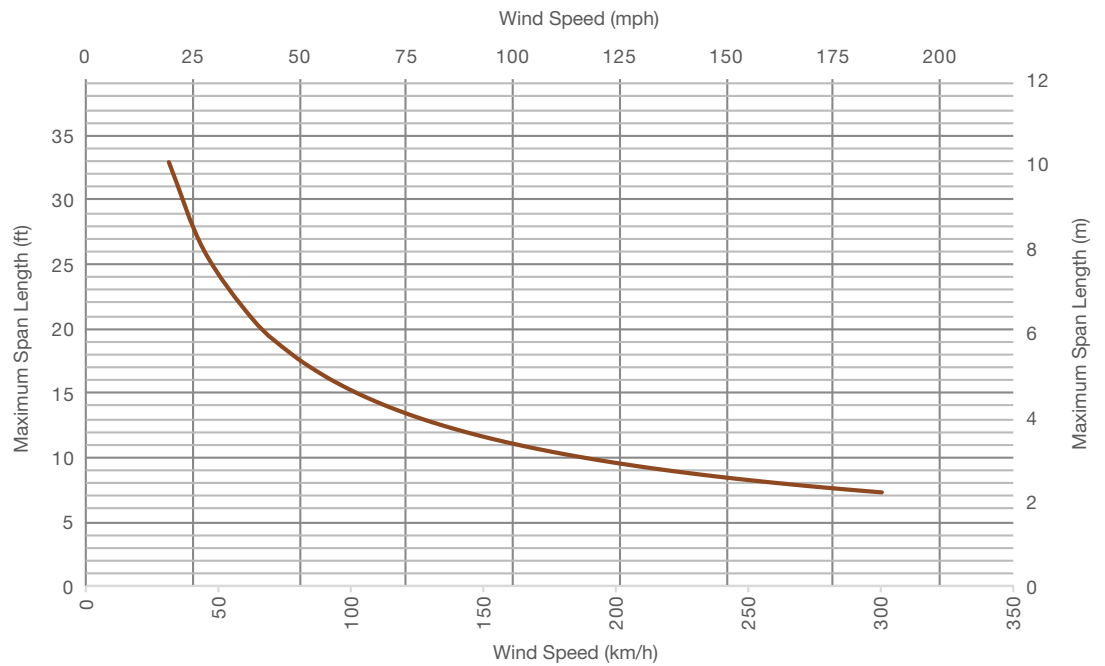
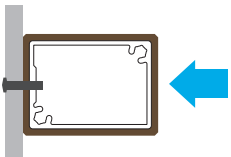


Dimensions	40 mm x 30 mm / 1 5/8" x 1 1/4"
Weight	0.74 kg/ml / 0.50 lb/ft
End Caps	Yes
Splices/Connectors	No

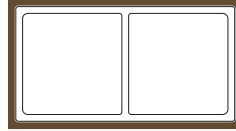
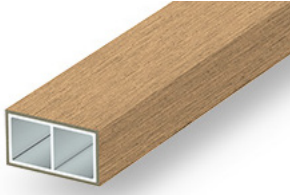
## Span length for wind on wide side



## Span length for wind on narrow side

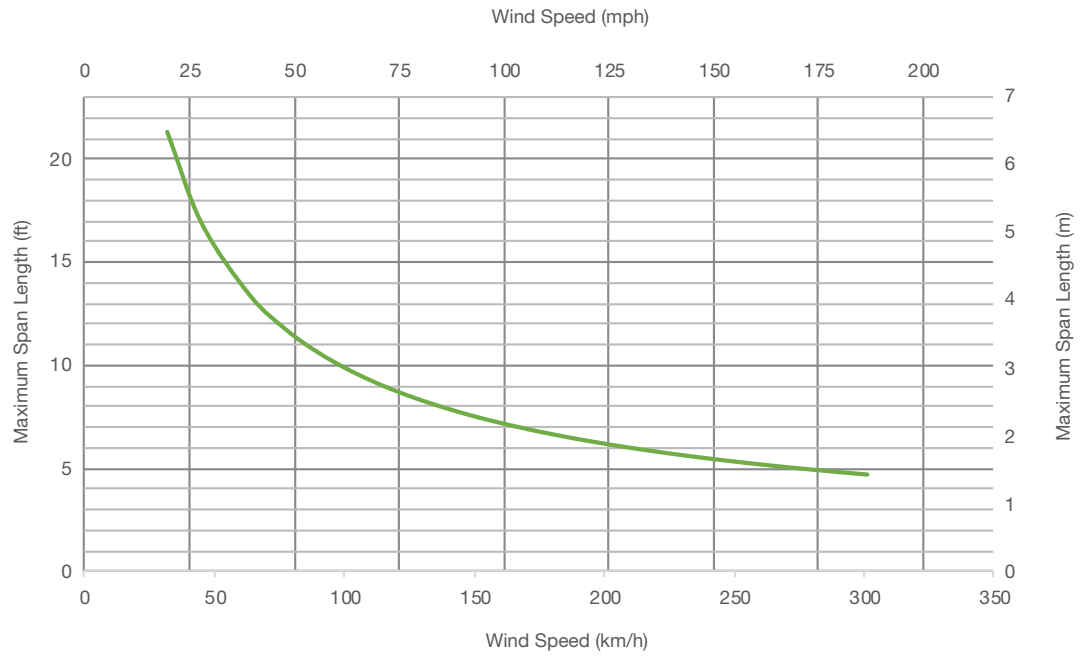
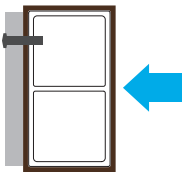


# Soleo 6005

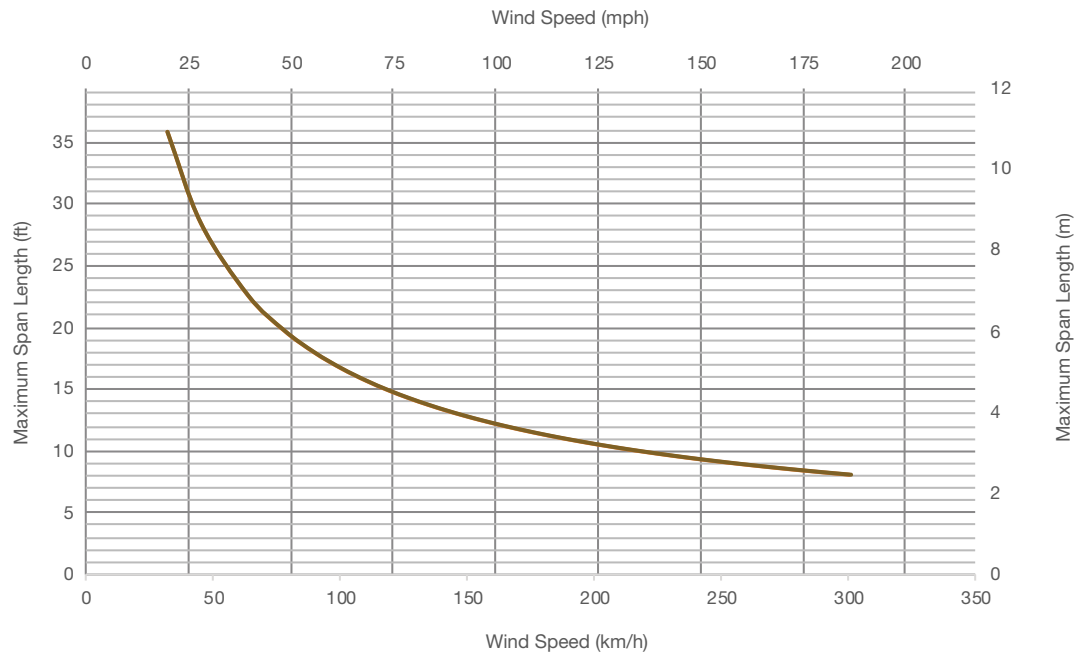
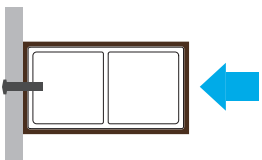


Dimensions	45 mm x 25 mm / 1 3/4" x 1"
Weight	0.60 kg/ml / 0.40 lb/ft
End Caps	No
Splices/Connectors	No

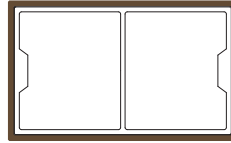
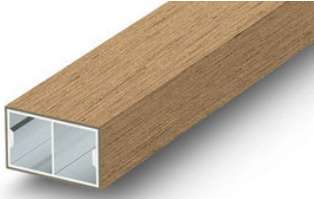
## Span length for wind on wide side



## Span length for wind on narrow side

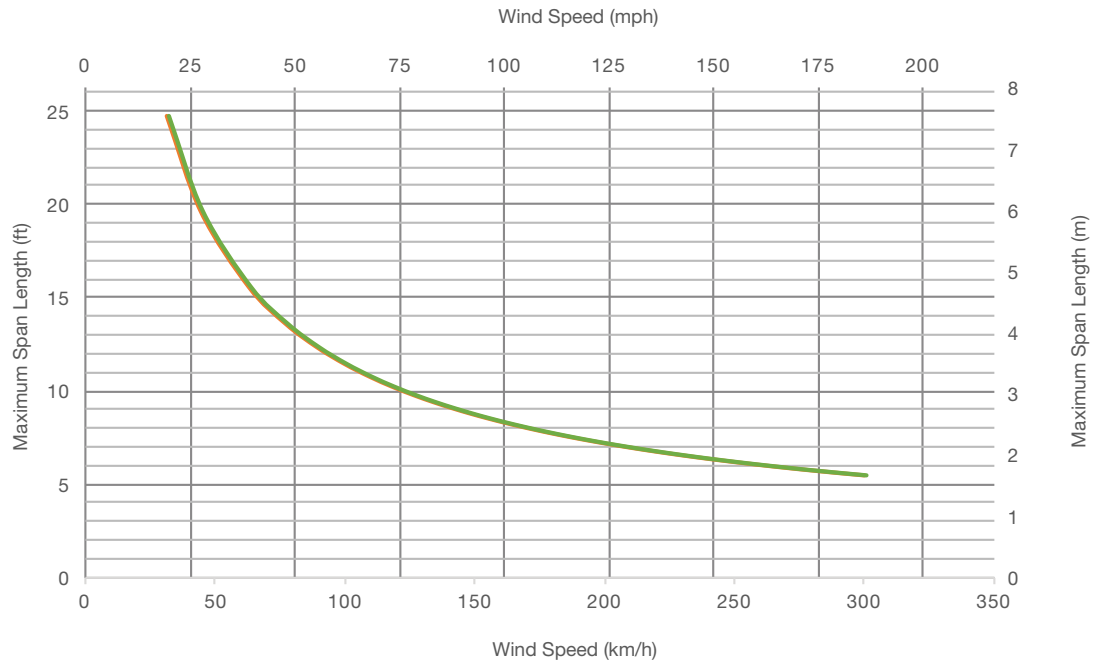
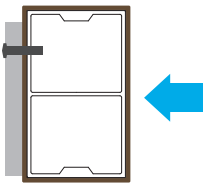


# Soleo 6008

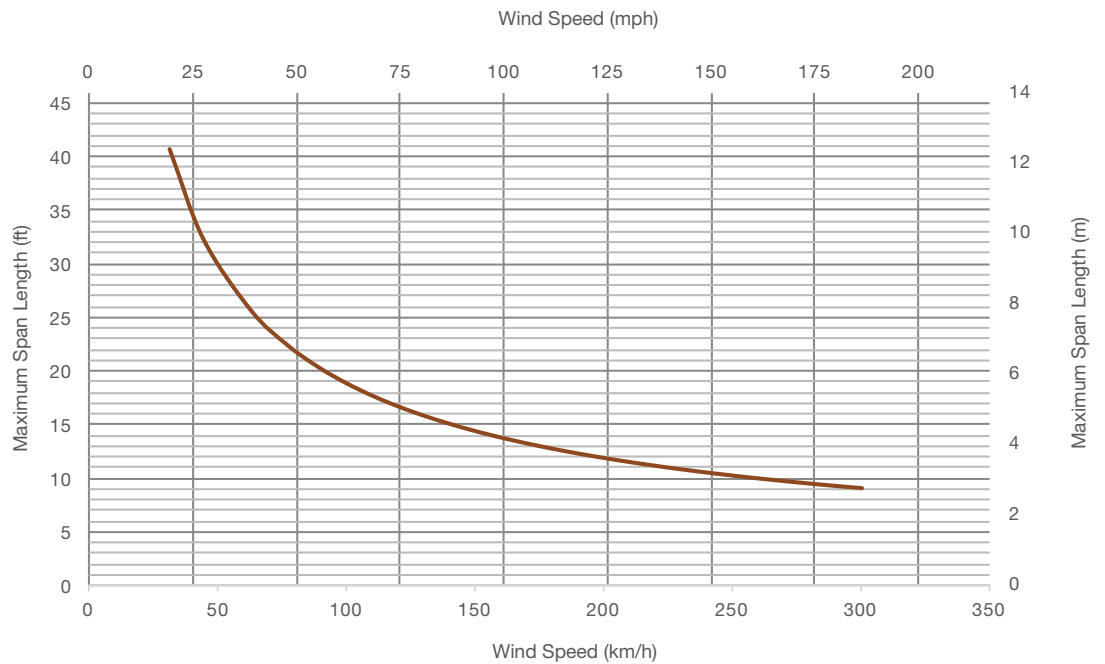
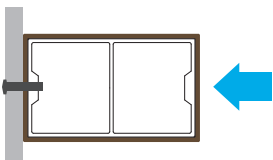


Dimensions	52 mm x 32 mm / 2" x 1 1/4"
Weight	0.77 kg/ml / 0.52 lb/ft
End Caps	Yes
Splices/Connectors	Yes

## Span length for wind on wide side



## Span length for wind on narrow side

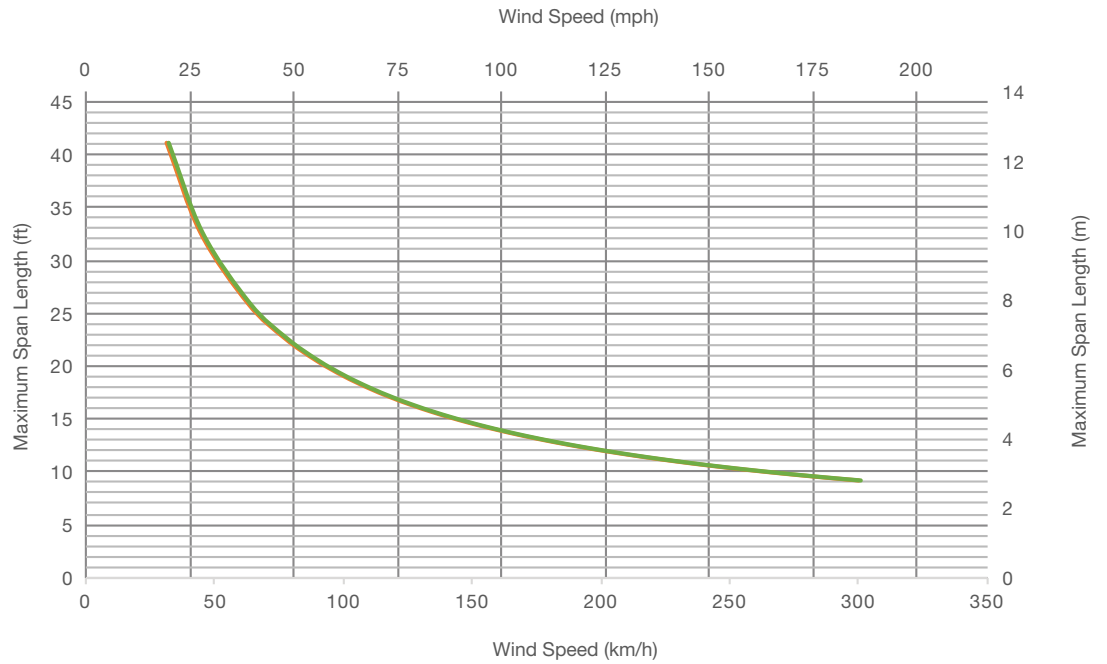
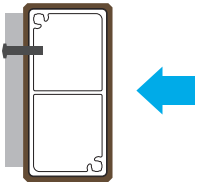


# Soleo 6029

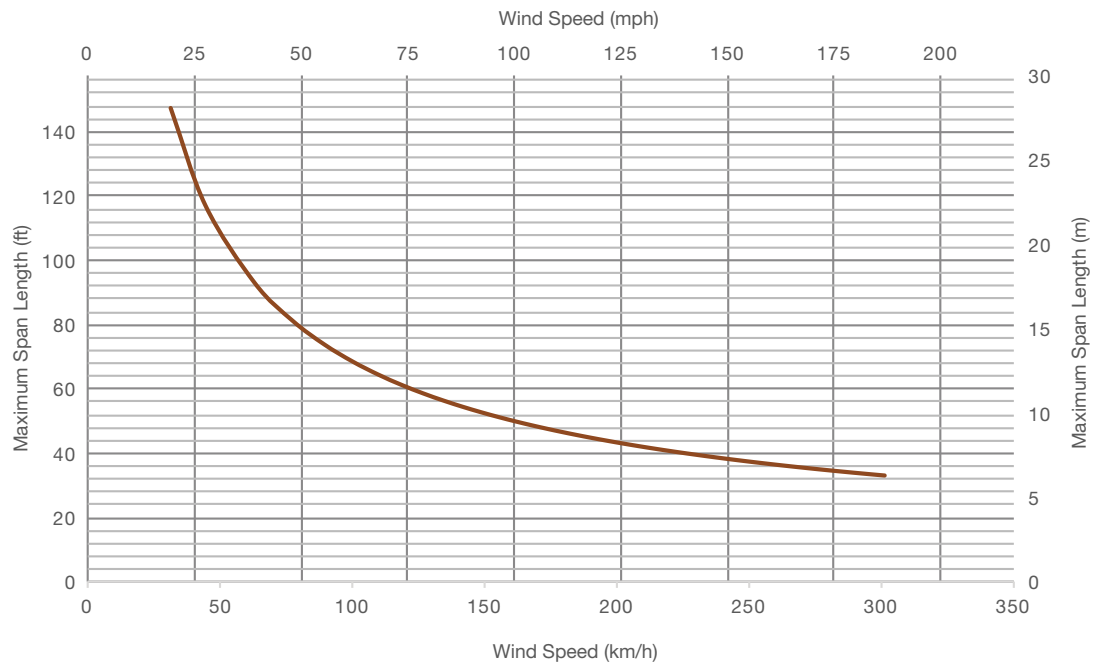
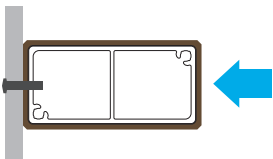


Dimensions	60 mm x 30 mm / 2 3/8" x 1 1/4"
Weight	1.00 kg/ml / 0.67 lb/ft
End Caps	Yes
Splices/Connectors	No

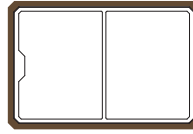
## Span length for wind on wide side



## Span length for wind on narrow side

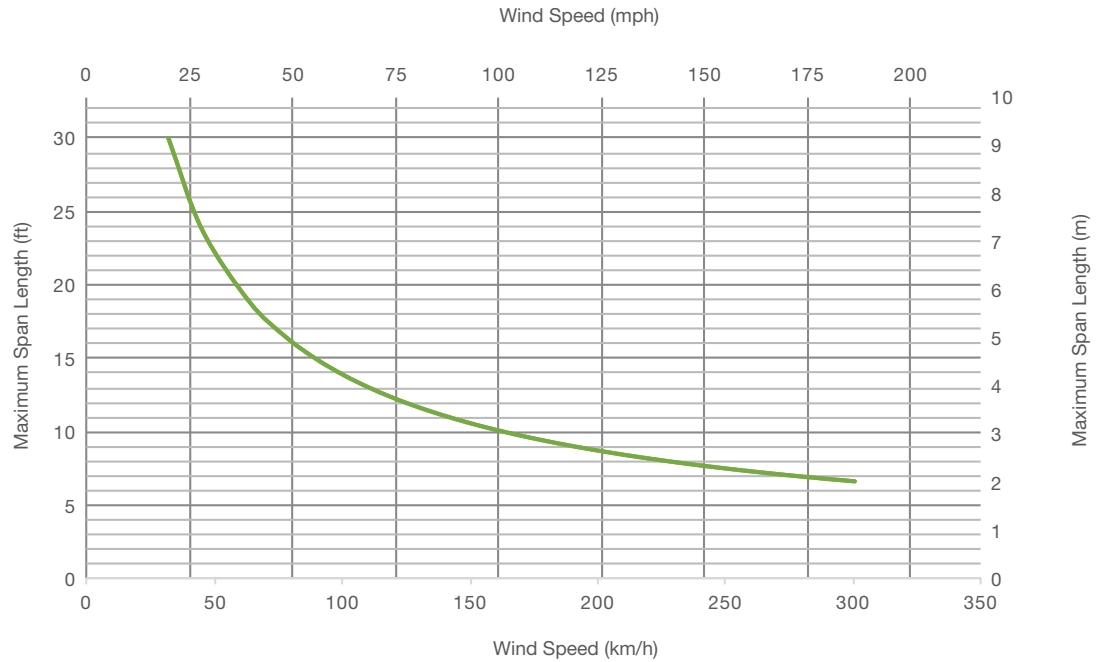
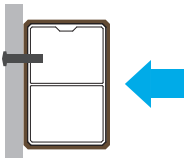


# Soleo 6026

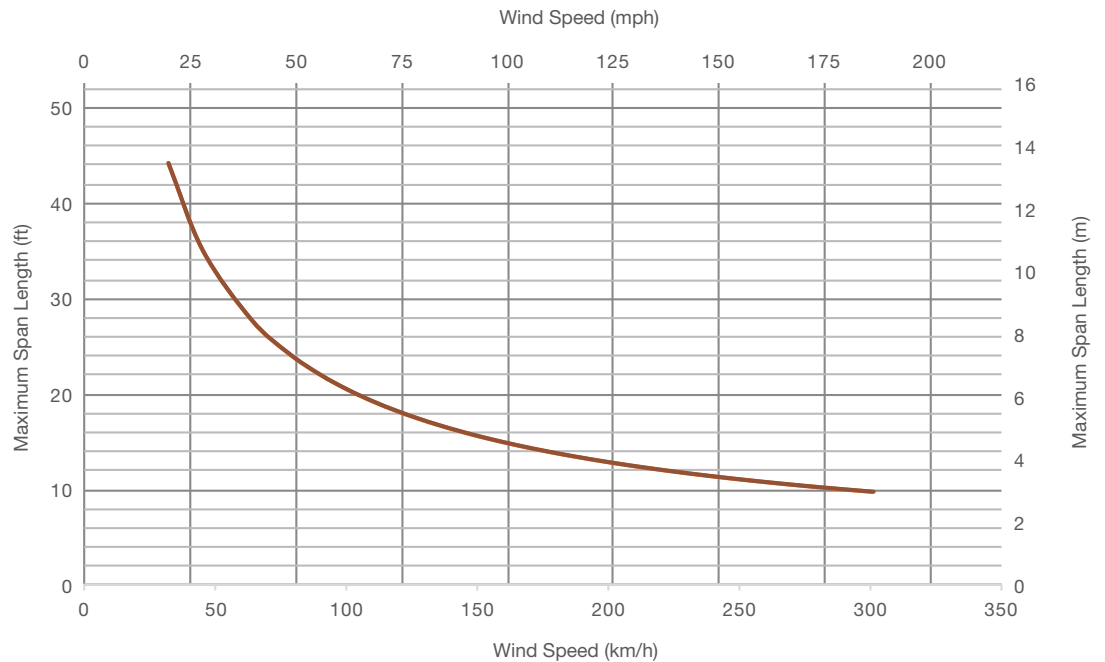
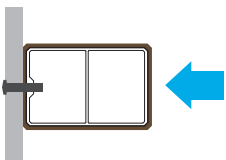


Dimensions	60 mm x 40 mm / 2 3/8" x 1 5/8"
Weight	1.05 kg/ml / 0.71 lb/ft
End Caps	Yes
Splices/Connectors	No

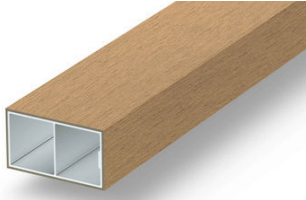
## Span length for wind on wide side



## Span length for wind on narrow side

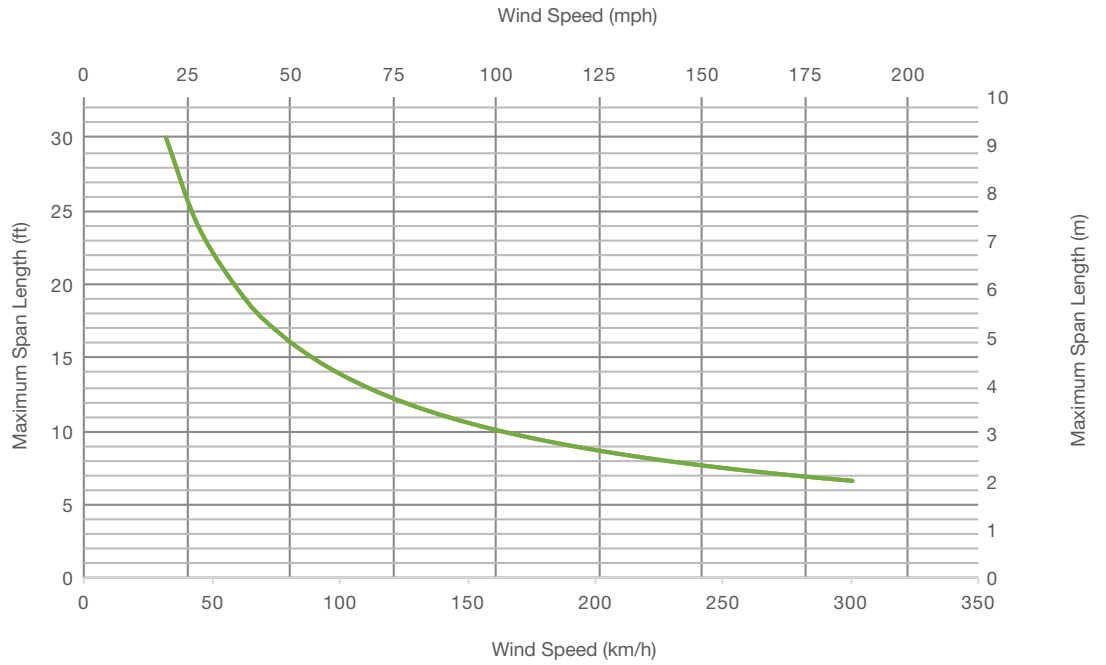
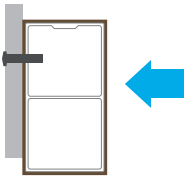


# Soleo 6011

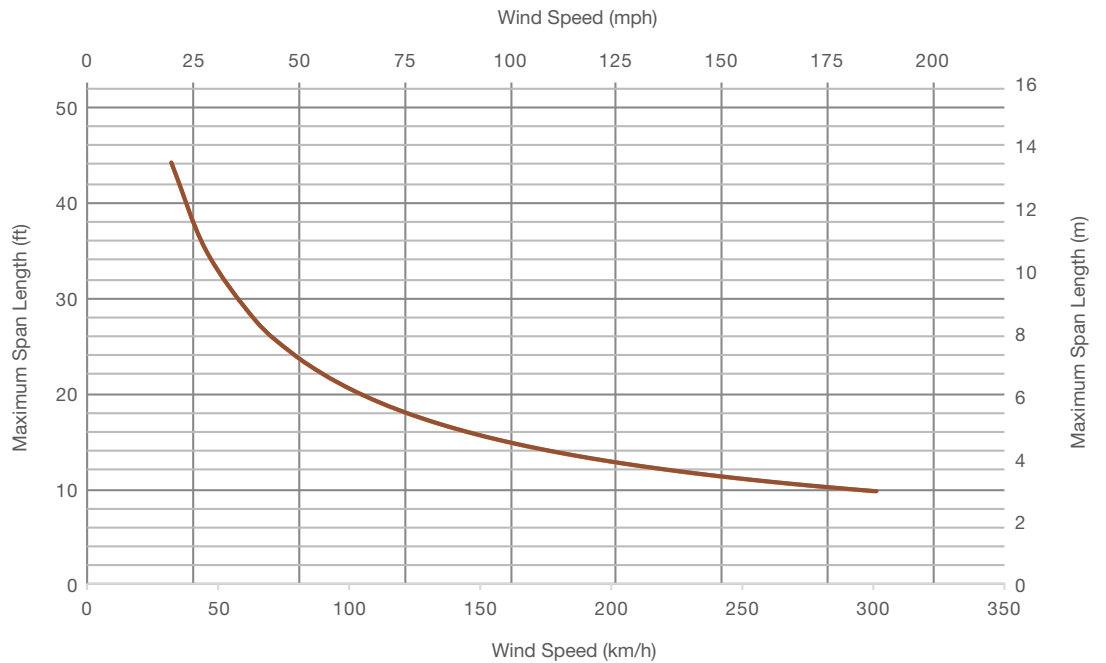
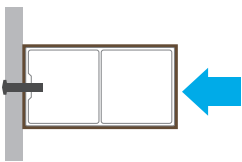


Dimensions	70 mm x 40 mm / 2 3/4" x 1 5/8"
Weight	1.12 kg/ml / 0.75 lb/ft
End Caps	Yes
Splices/Connectors	No

## Span length for wind on wide side



## Span length for wind on narrow side

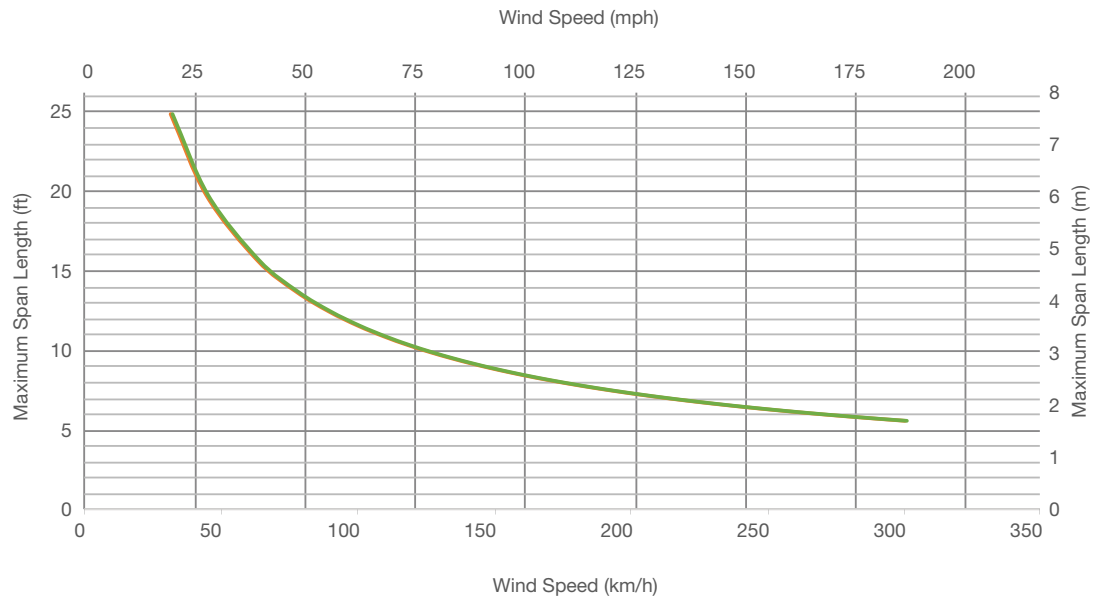
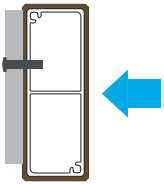


# Soleo 6030

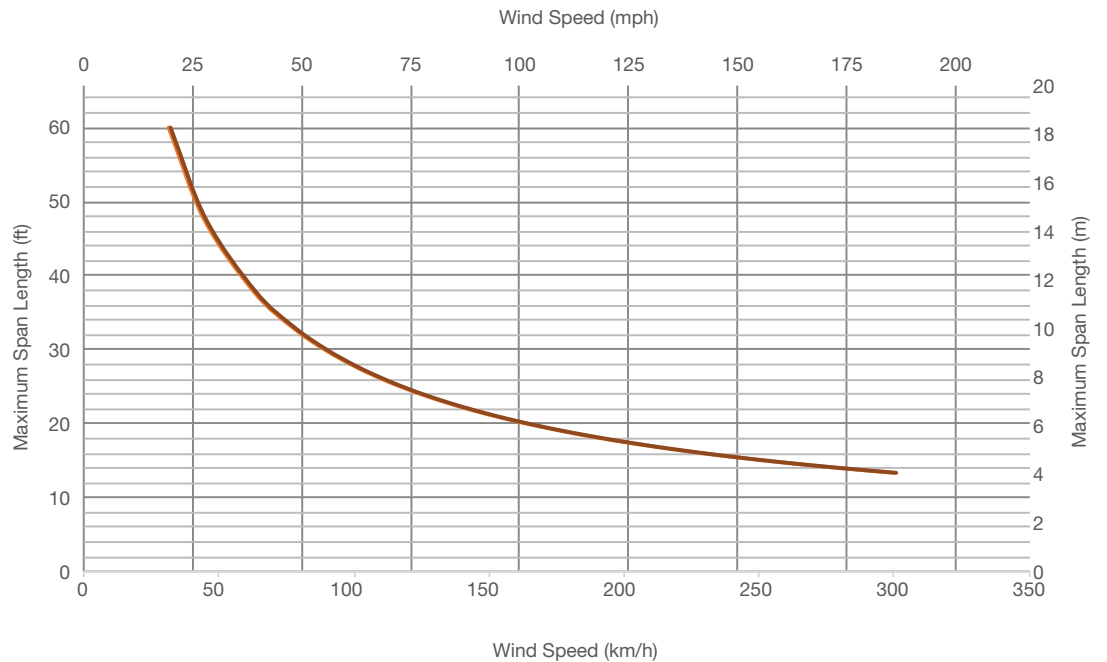
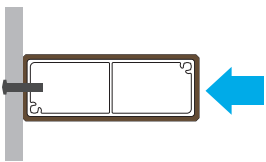


Dimensions	80 mm x 30 mm / 3 1/8" x 1 1/4"
Weight	1.20 kg/ml / 0.81 lb/ft
End Caps	Yes
Splices/Connectors	No

## Span length for wind on wide side

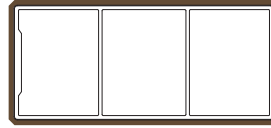
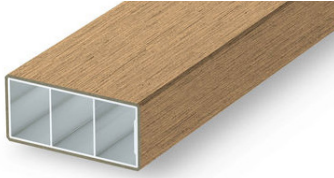


## Span length for wind on narrow side



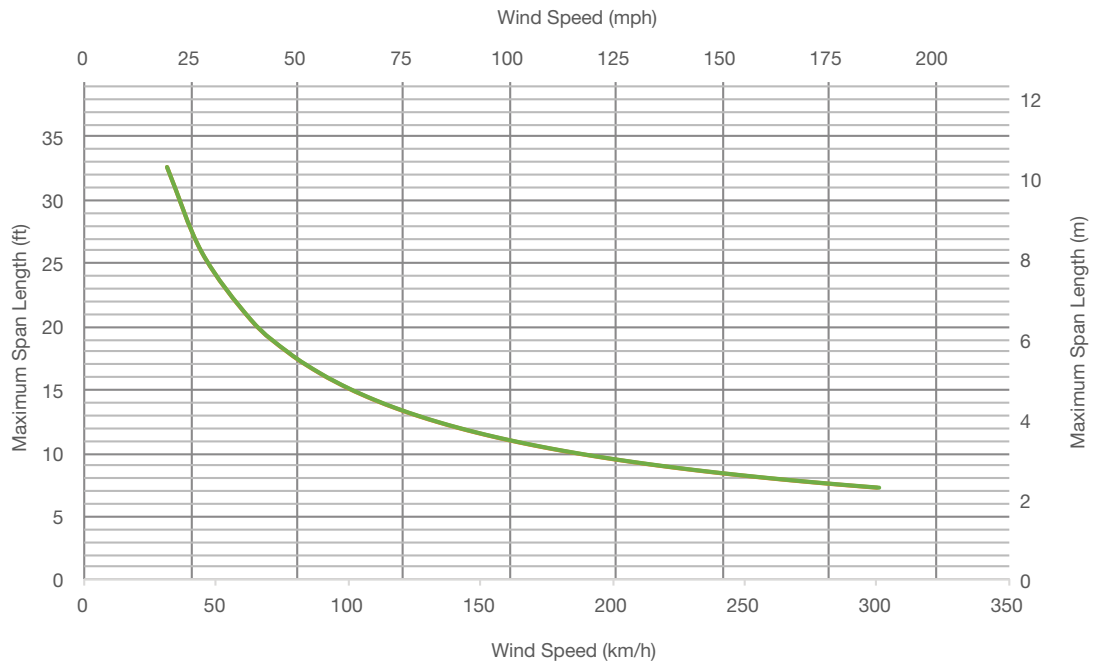
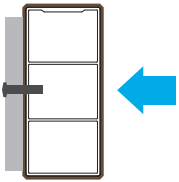


# Soleo 6017

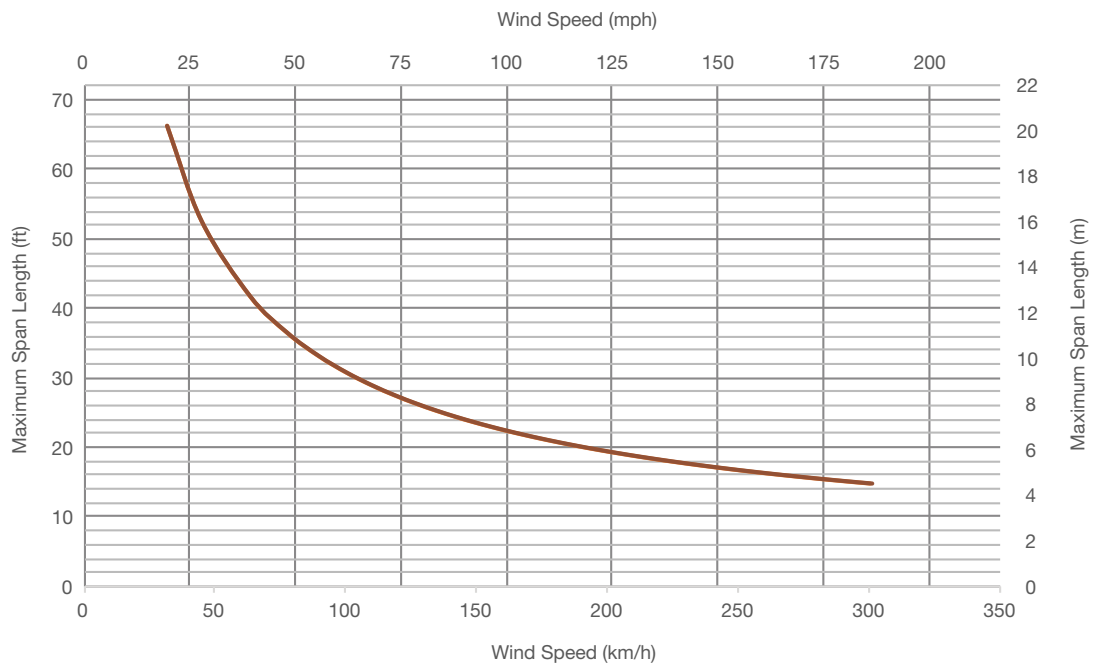
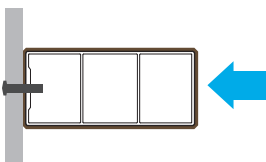


Dimensions	93 mm x 43 mm / 3 5/8" x 1 5/8"
Weight	1.60 kg/ml / 1.08 lb/ft
End Caps	Yes
Splices/Connectors	No

## Span length for wind on wide side



## Span length for wind on narrow side

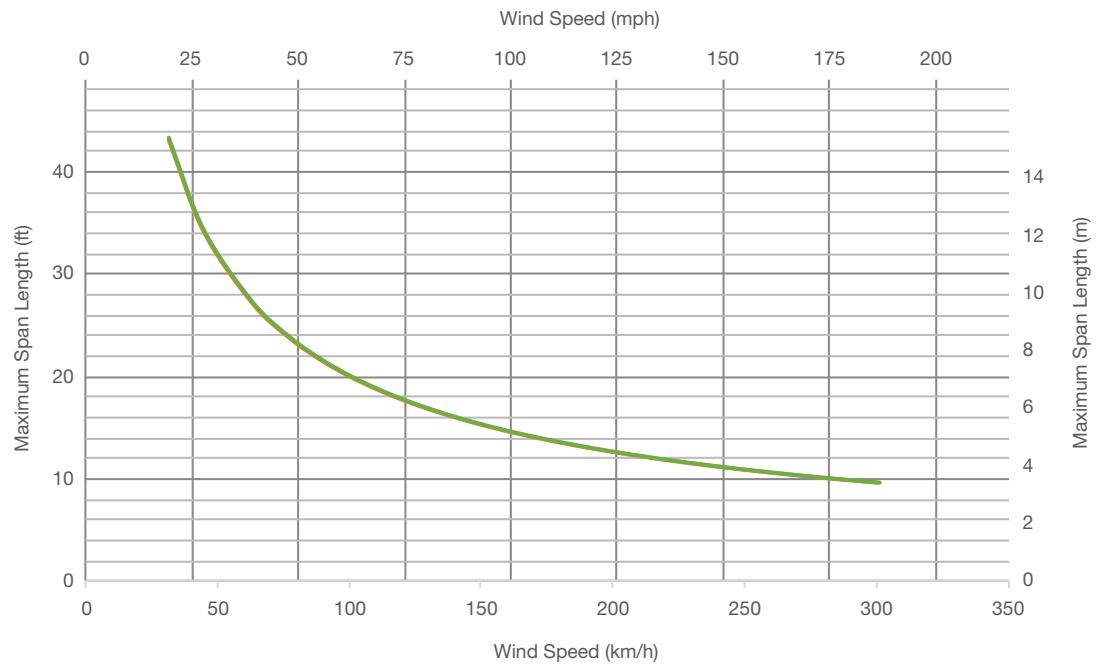
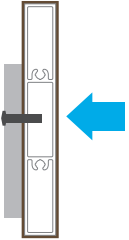


# Soleo 6036

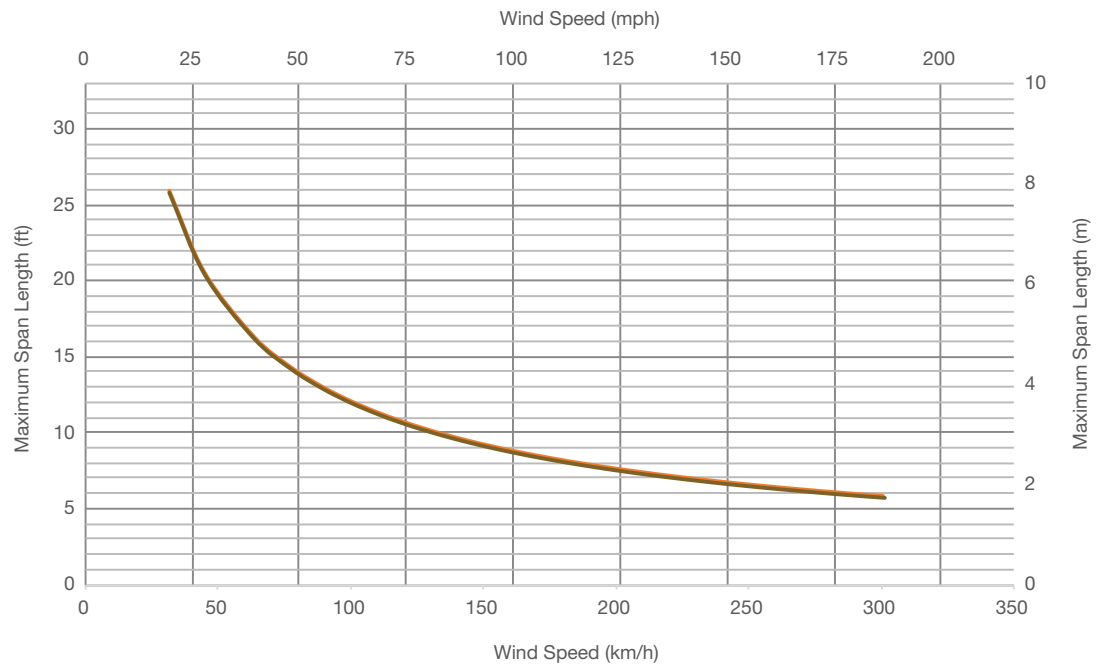
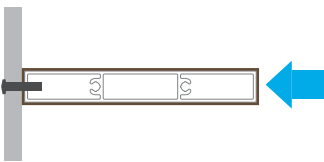


Dimensions	100 mm x 15 mm / 4" x 5/8"
Weight	1.00 kg/ml / 0.67 lb/ft
End Caps	No
Splices/Connectors	No

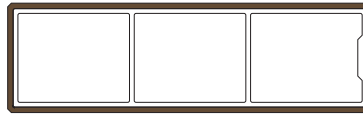
## Span length for wind on wide side



## Span length for wind on narrow side

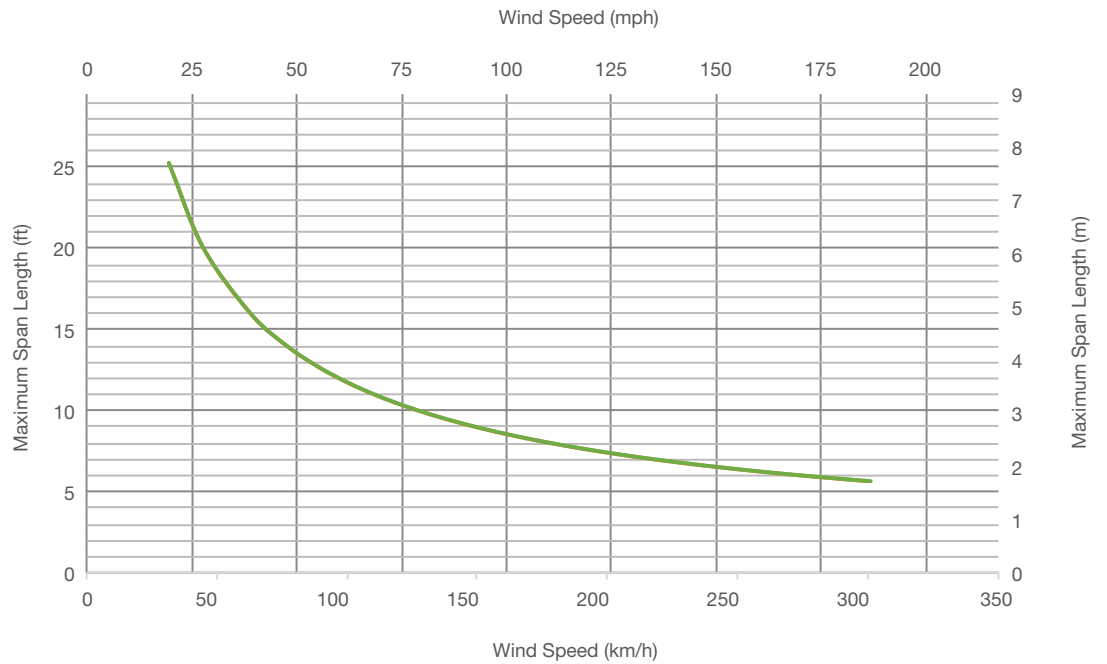
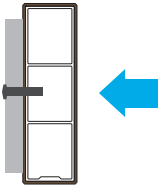


# Soleo 6009

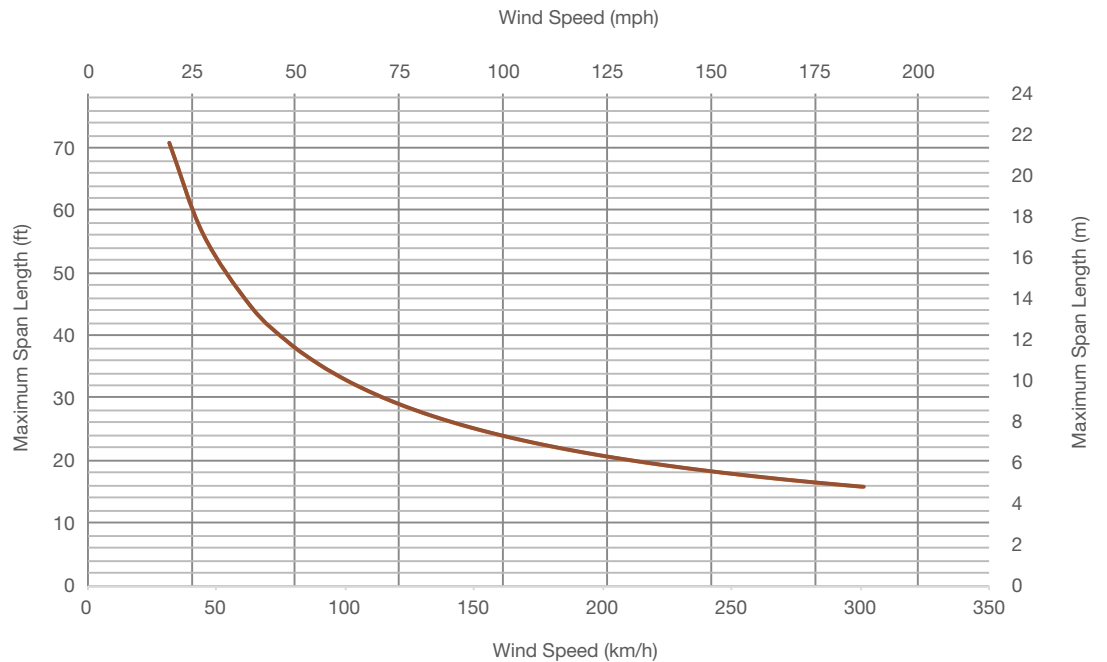
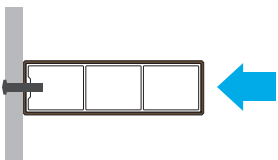


Dimensions	100 mm x 30 mm / 4" x 1 1/4"
Weight	1.40 kg/ml / 0.94 lb/ft
End Caps	Yes
Splices/Connectors	No

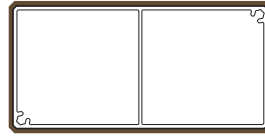
## Span length for wind on wide side



## Span length for wind on narrow side

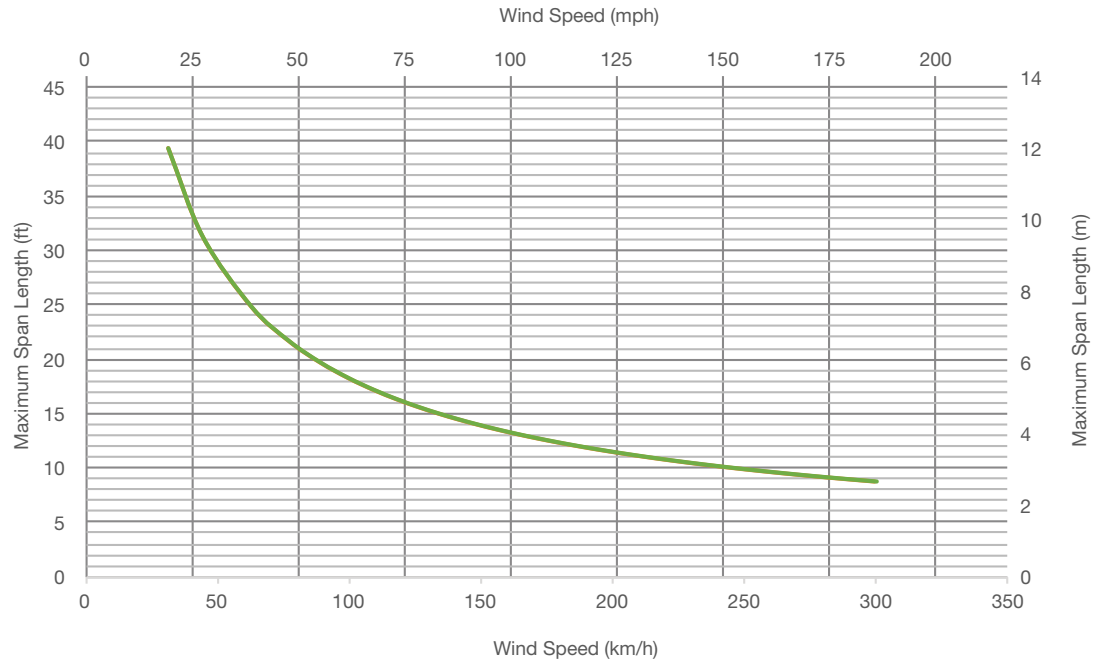
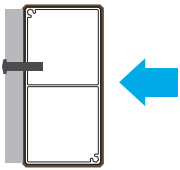


# Soleo 6034

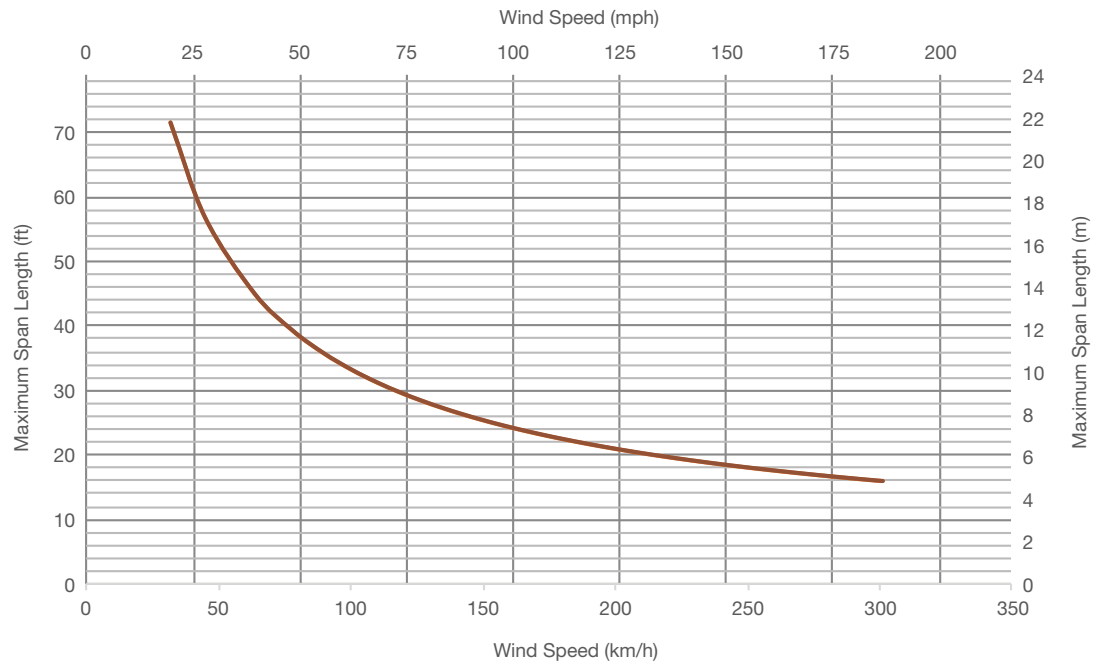
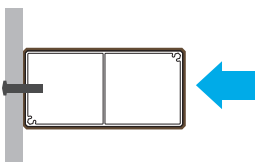


Dimensions	105 mm x 53 mm / 4 1/8" x 2 1/8"
Weight	1.94 kg/ml / 1.30 lb/ft
End Caps	Yes
Splices/Connectors	No

## Span length for wind on wide side



## Span length for wind on narrow side

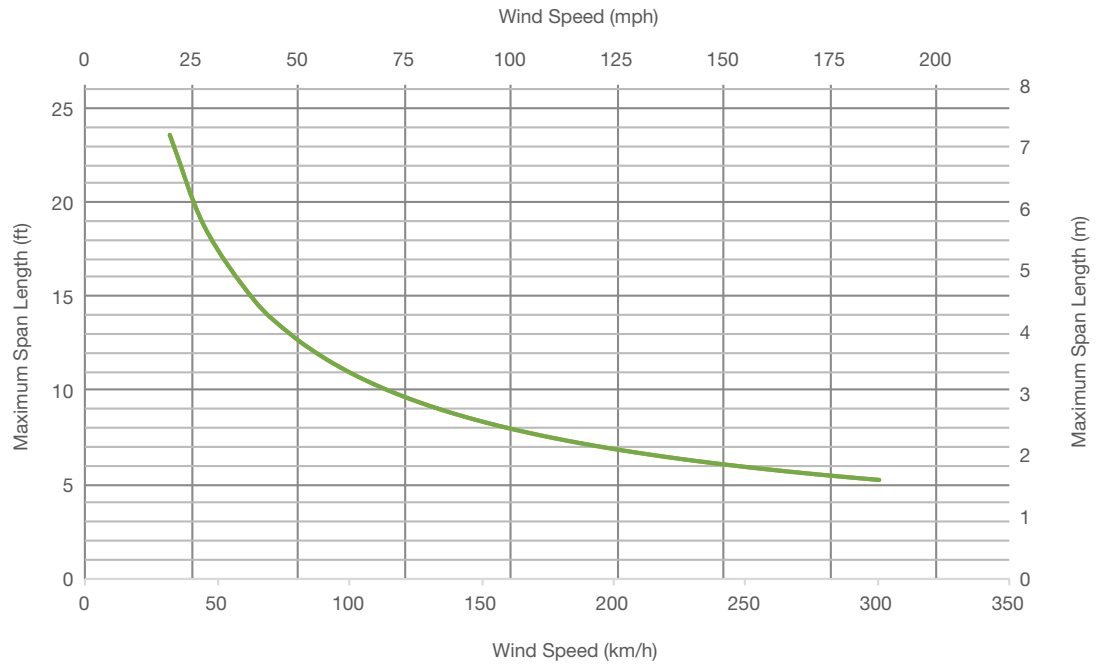
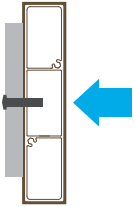


# Soleo 6031

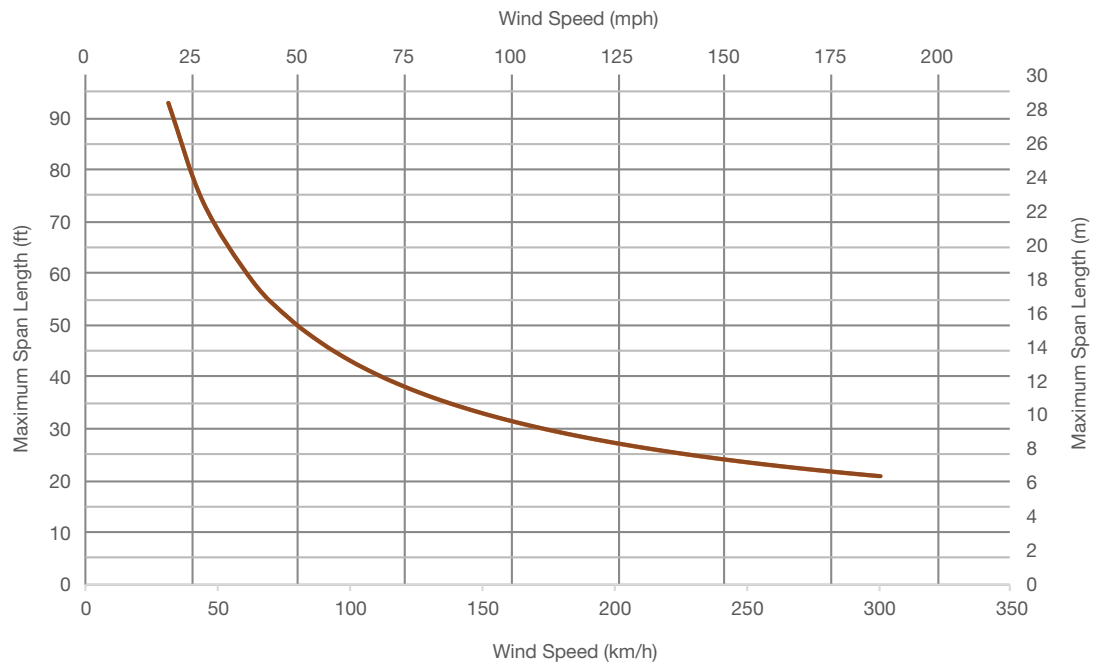
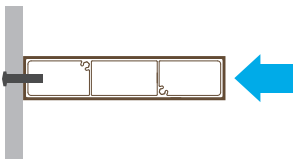


Dimensions	126 mm x 28 mm / 5" x 1 1/8"
Weight	1.60 kg/ml / 1.08 lb/ft
End Caps	Yes
Splices/Connectors	Yes

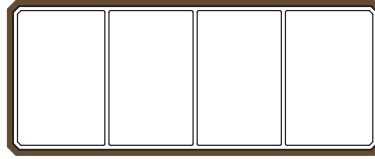
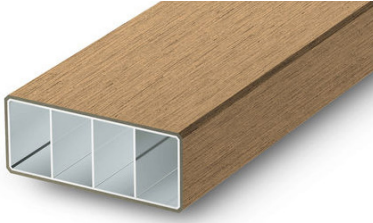
## Span length for wind on wide side



## Span length for wind on narrow side

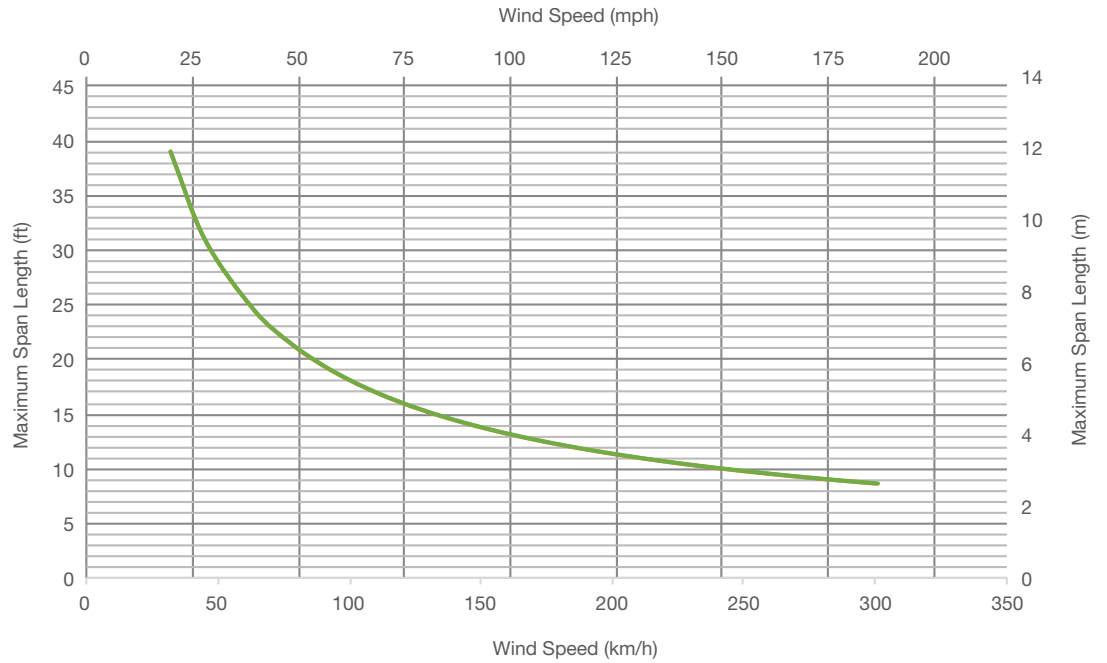
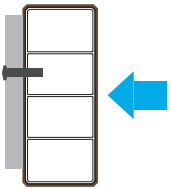


# Soleo 6010

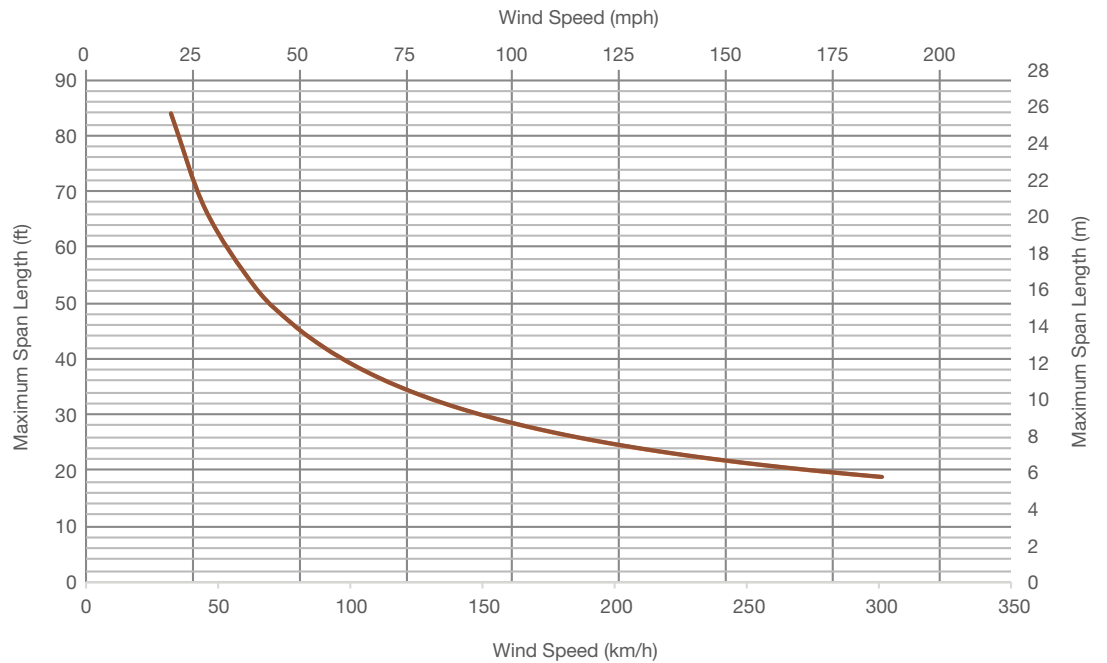
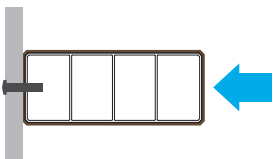


Dimensions	128 mm × 53 mm / 5 1/8" × 2 1/8"
Weight	2.30 kg/ml / 1.55 lb/ft
End Caps	Yes
Splices/Connectors	Yes

## Span length for wind on wide side



## Span length for wind on narrow side

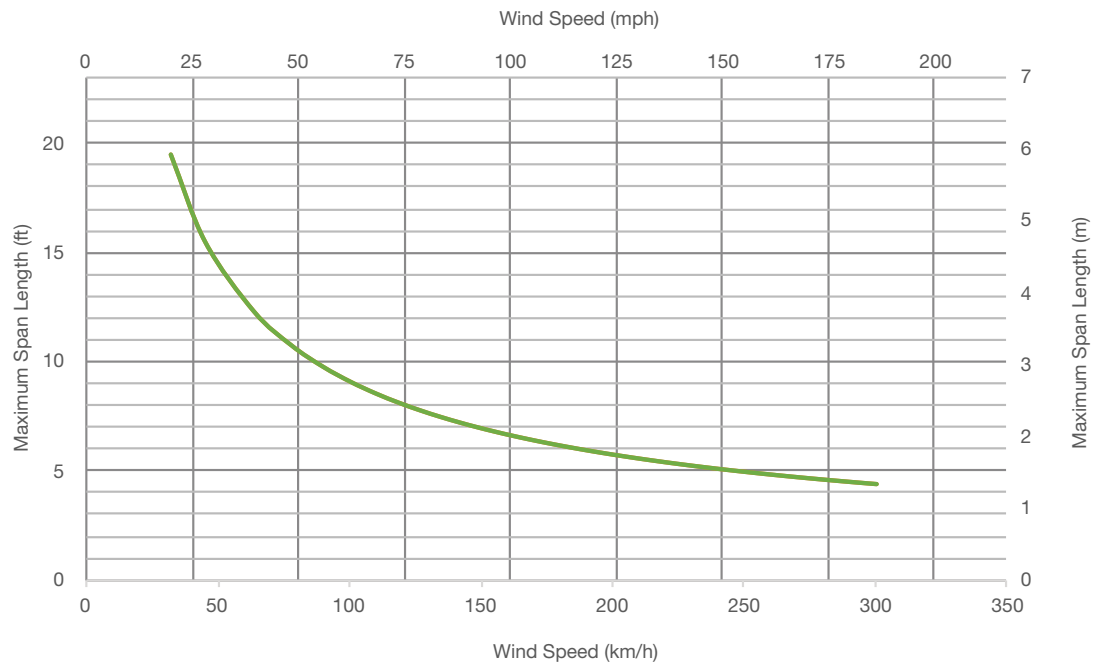
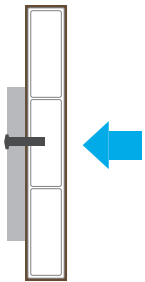


# Soleo 6038

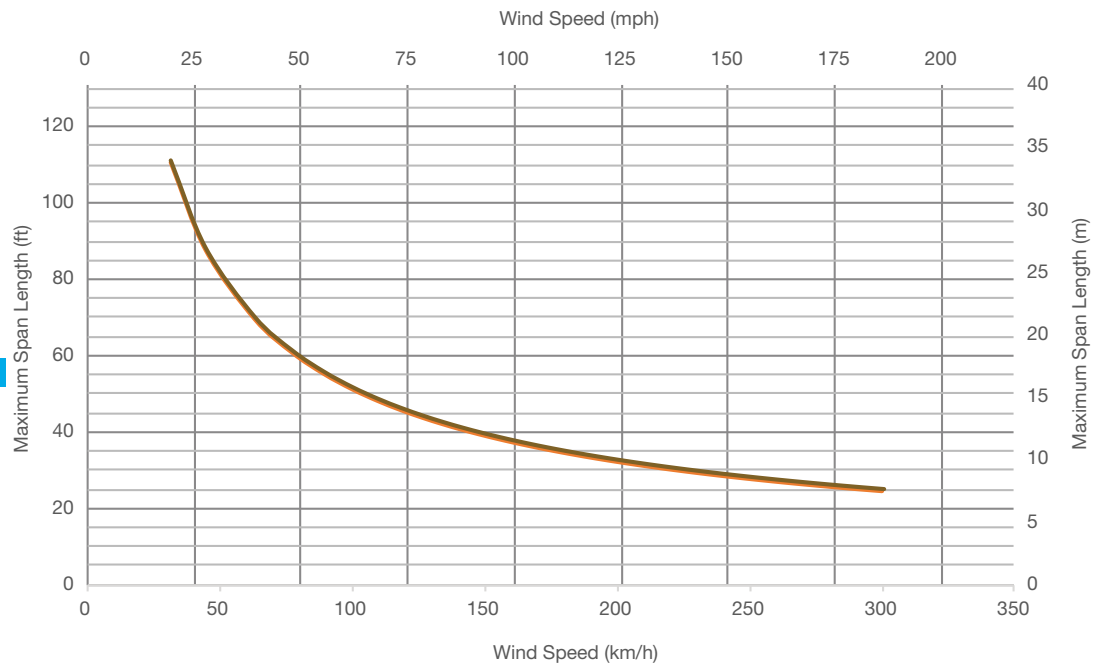
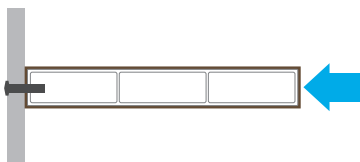


Dimensions	145 mm x 22 mm / 5 3/4" x 7/8"
Weight	2.00 kg/ml / 1.34 lb/ft
End Caps	No
Splices/Connectors	No

Span length for wind on wide side



Span length for wind on narrow side

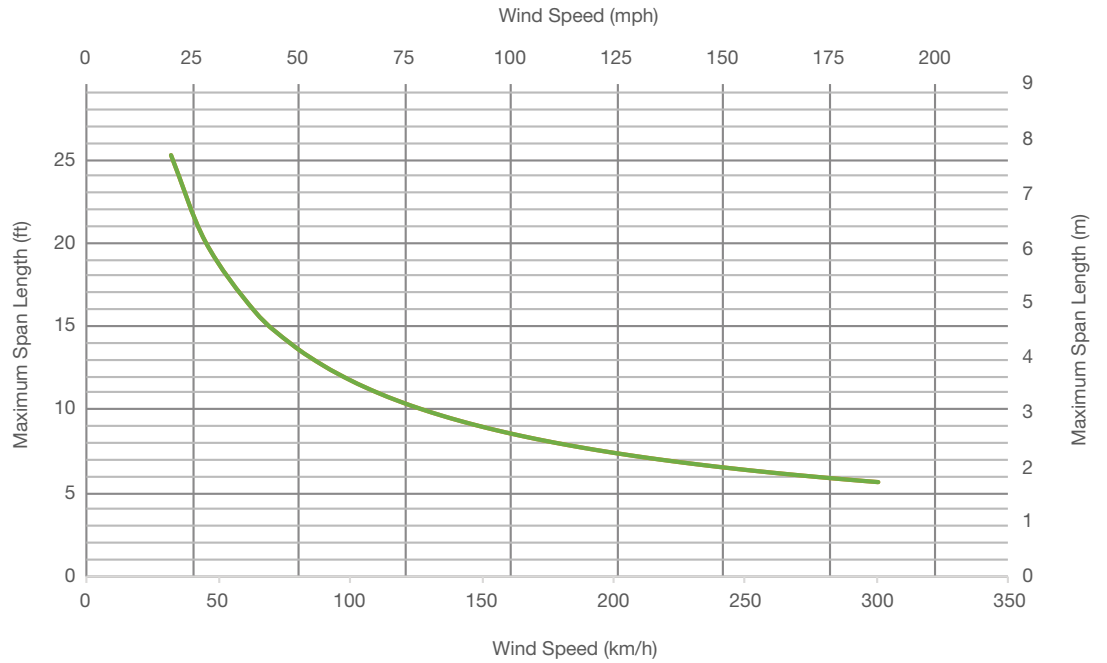
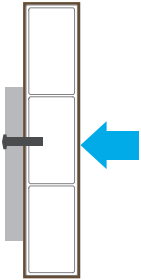


# Soleo 6024

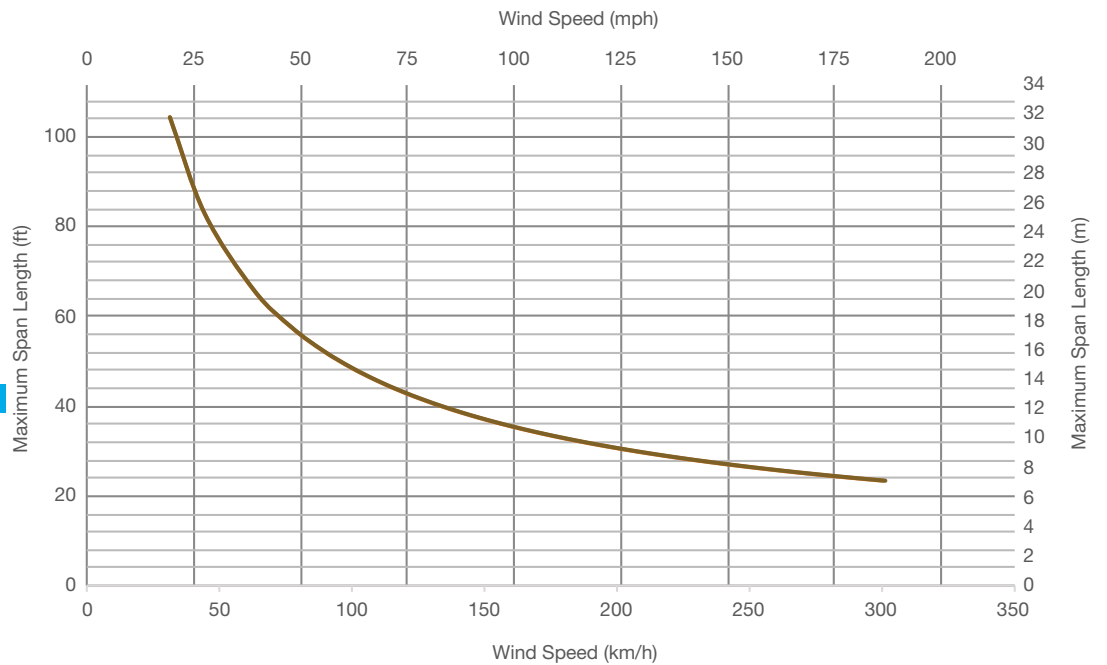
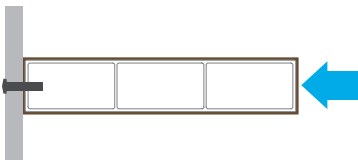


Dimensions	145 mm x 30 mm / 5 3/4" x 1 1/4"
Weight	2.06 kg/ml / 1.38 lb/ft
End Caps	No
Splices/Connectors	No

## Span length for wind on wide side

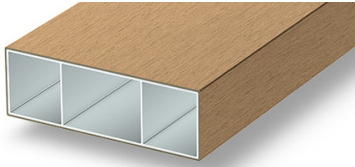


## Span length for wind on narrow side



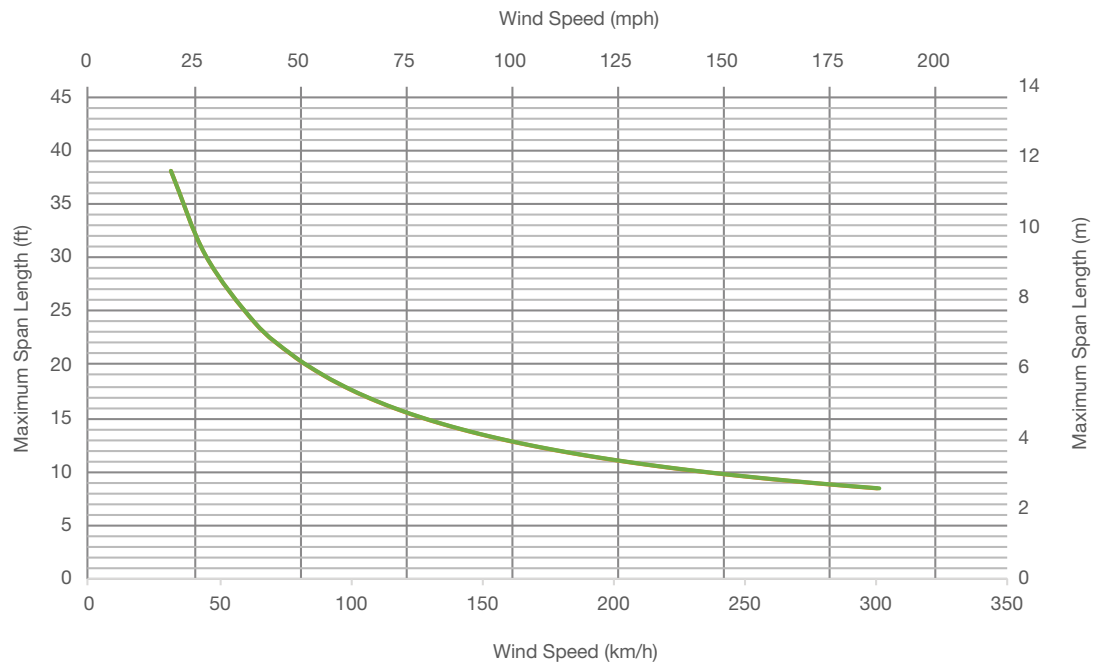
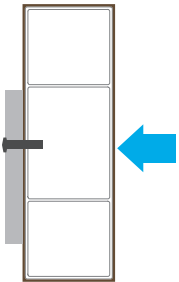


# Soleo 6040

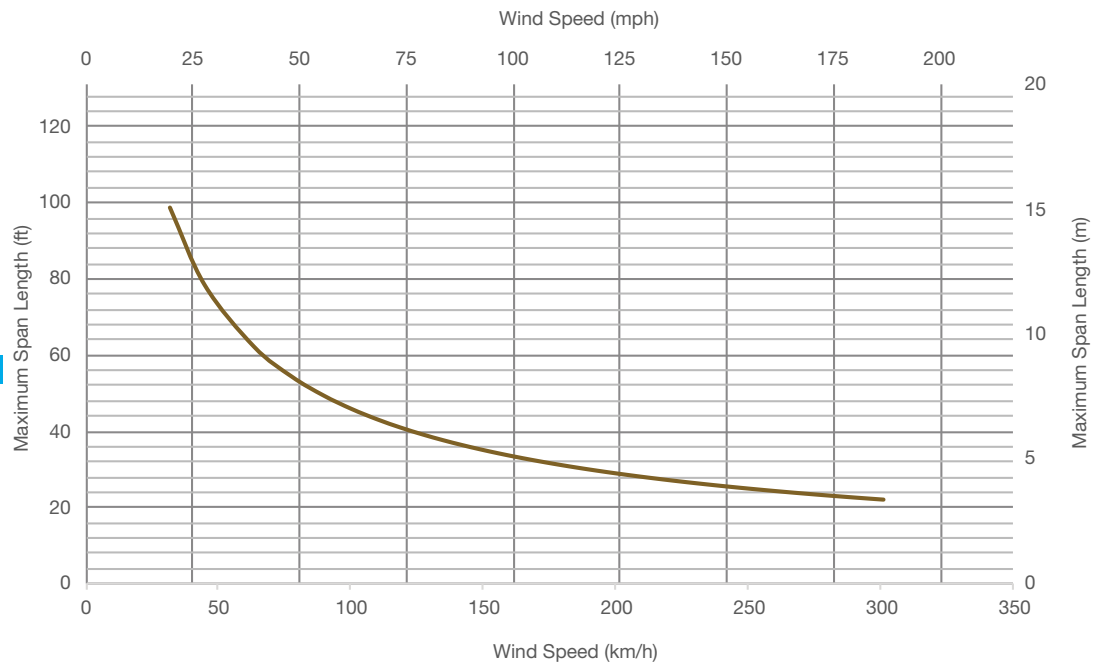
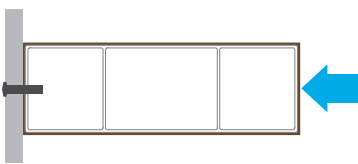


Dimensions	150 mm x 50 mm / 6" x 2"
Weight	2.40 kg/ml / 1.61 lb/ft
End Caps	No
Splices/Connectors	No

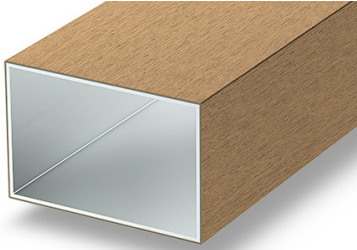
## Span length for wind on wide side



## Span length for wind on narrow side

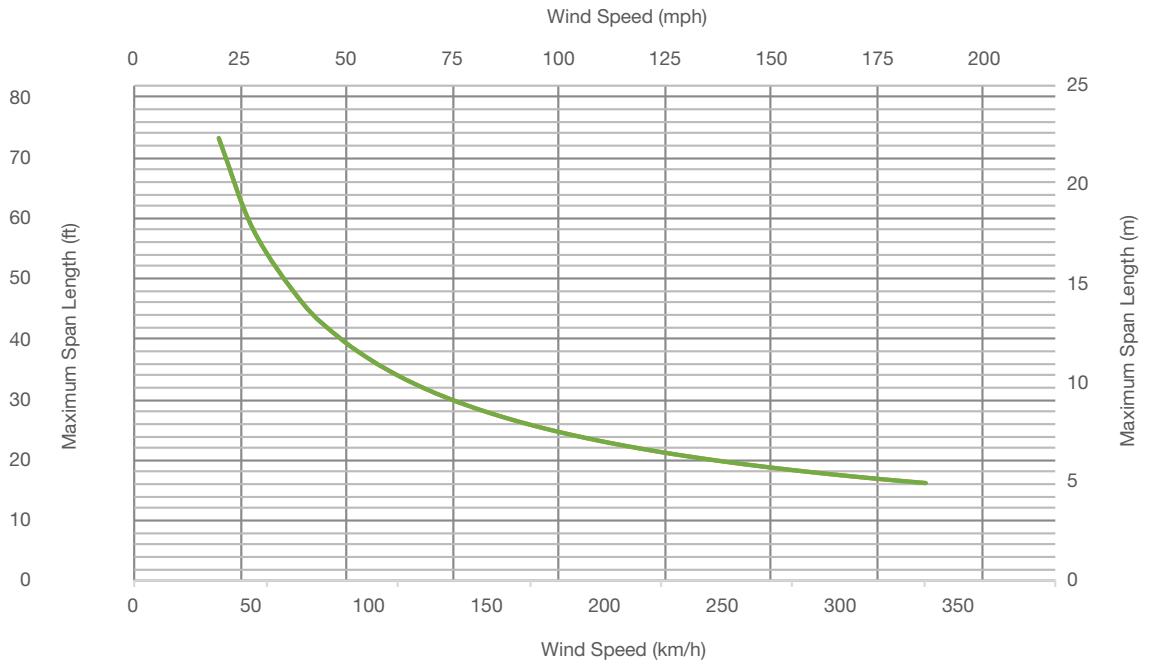
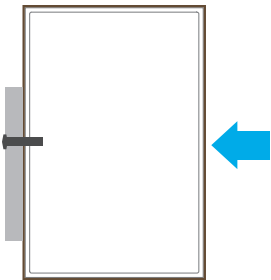


# Soleo 6050

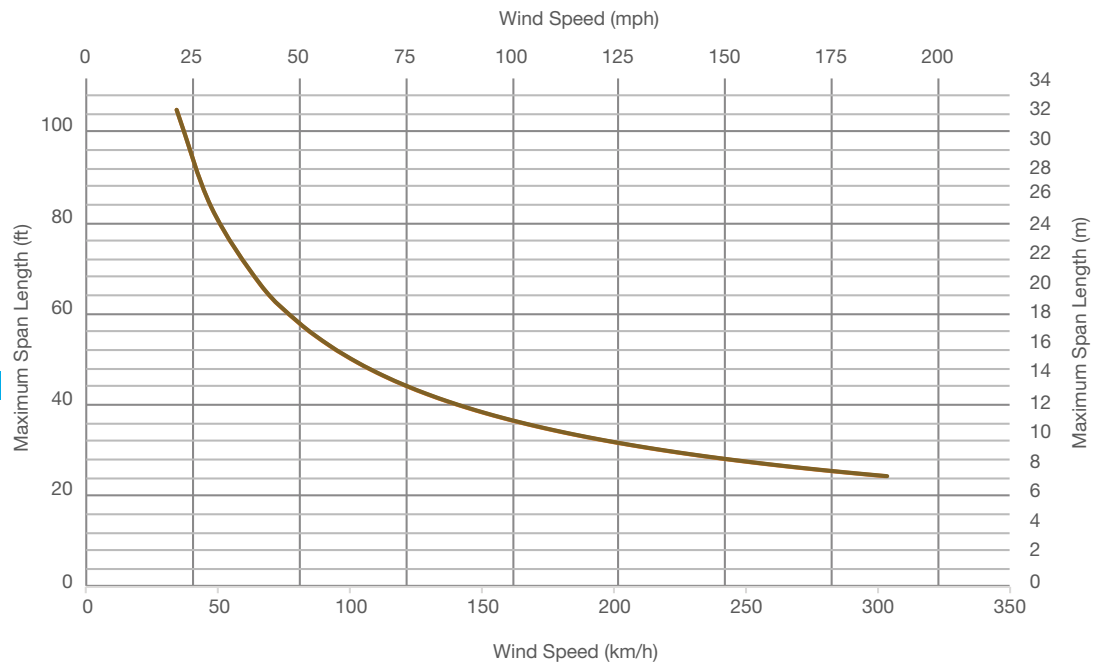


Dimensions	150 mm x 100 mm / 6" x 4"
Weight	3.90 kg/ml / 2.62 lb/ft
End Caps	No
Splices/Connectors	No

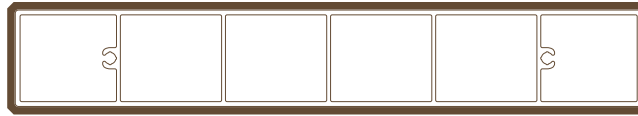
## Span length for wind on wide side



## Span length for wind on narrow side

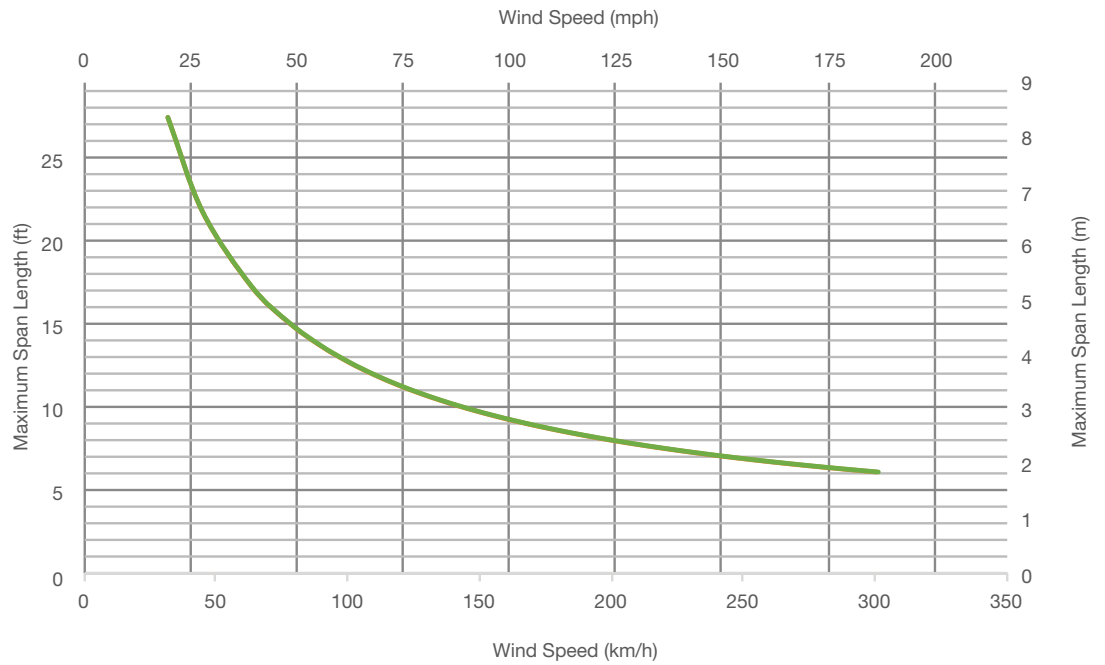
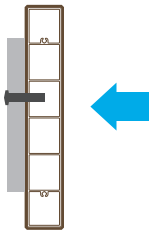


# Soleo 6033

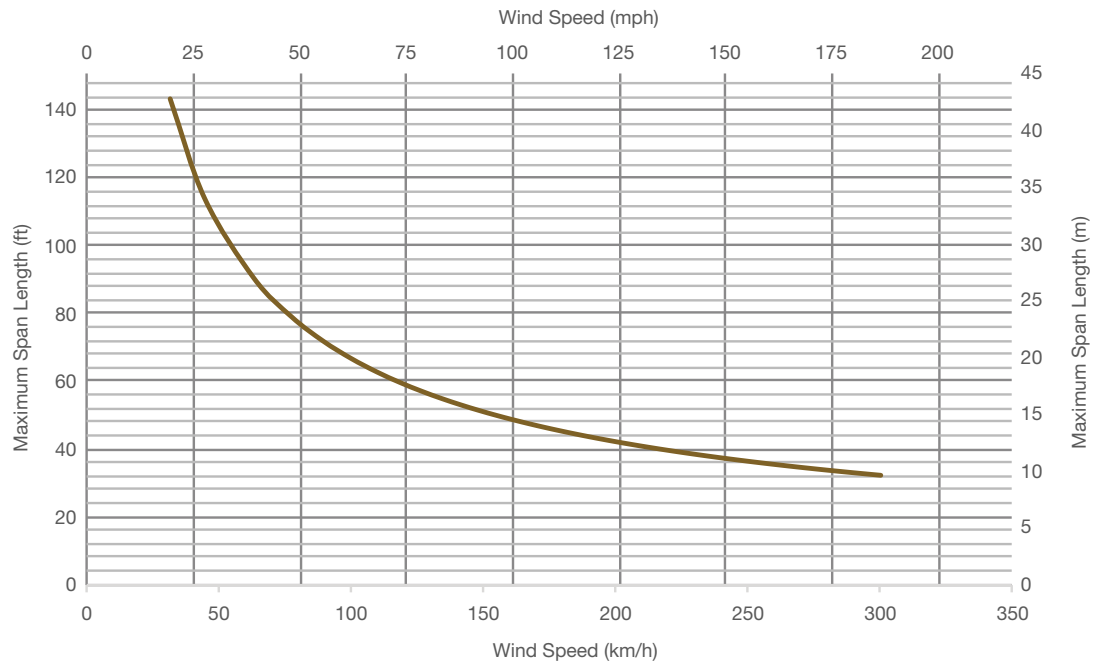
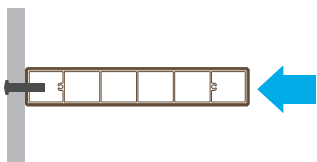


Dimensions	200 mm x 35 mm / 7 7/8" x 1 3/8"
Weight	3.30 kg/ml / 2.22 lb/ft
End Caps	Yes
Splices/Connectors	Yes

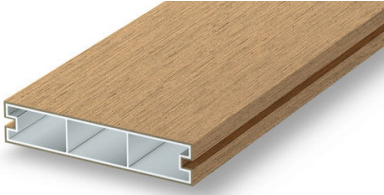
## Span length for wind on wide side



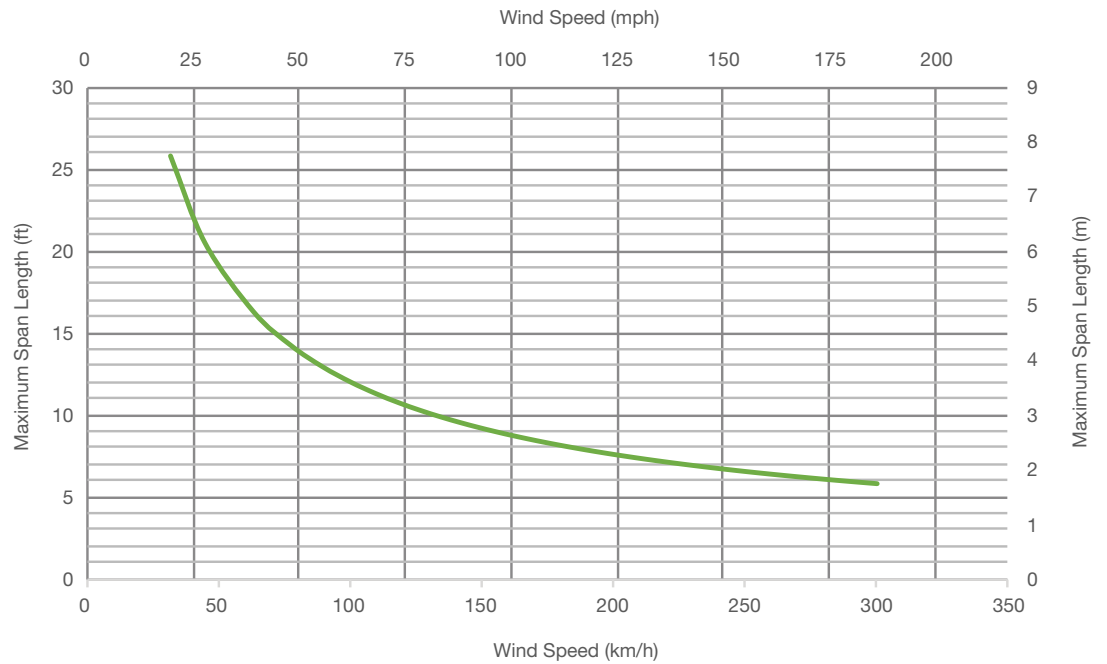
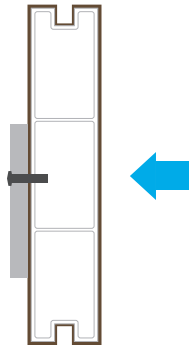
## Span length for wind on narrow side



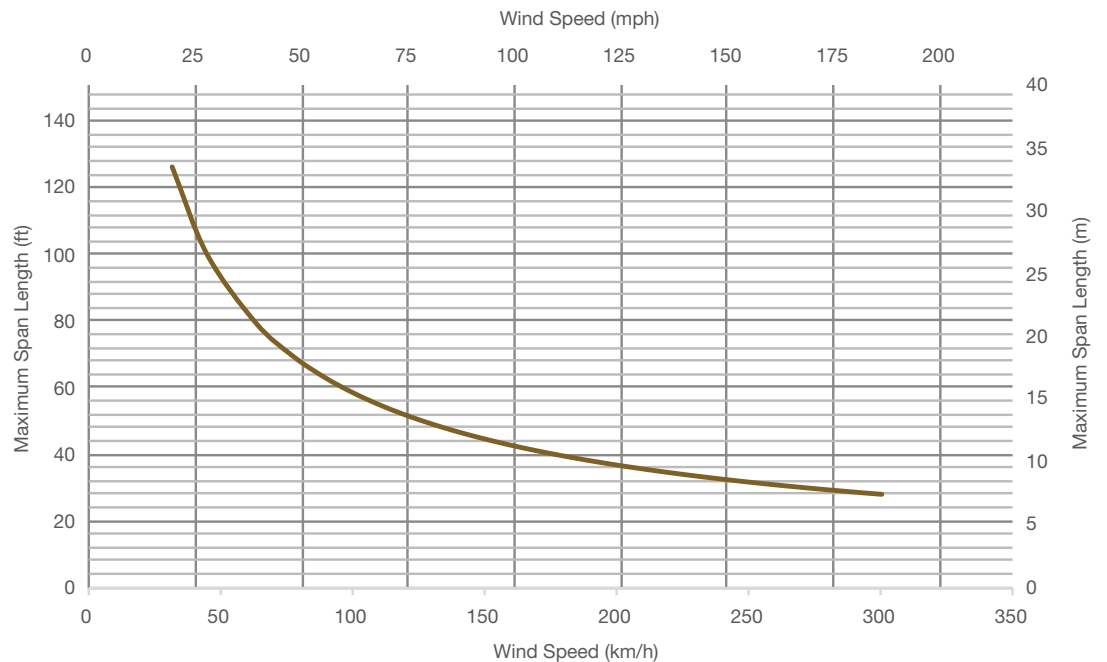
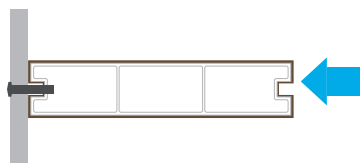
# Planeo 4010



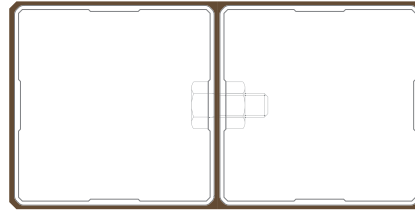
Dimensions	145 mm x 30 mm / 5 3/4" x 1 1/4"
Weight	2.21 kg/ml / 1.49 lb/ft
End Caps	No
Splices/Connectors	No



**Span length for wind on narrow side**

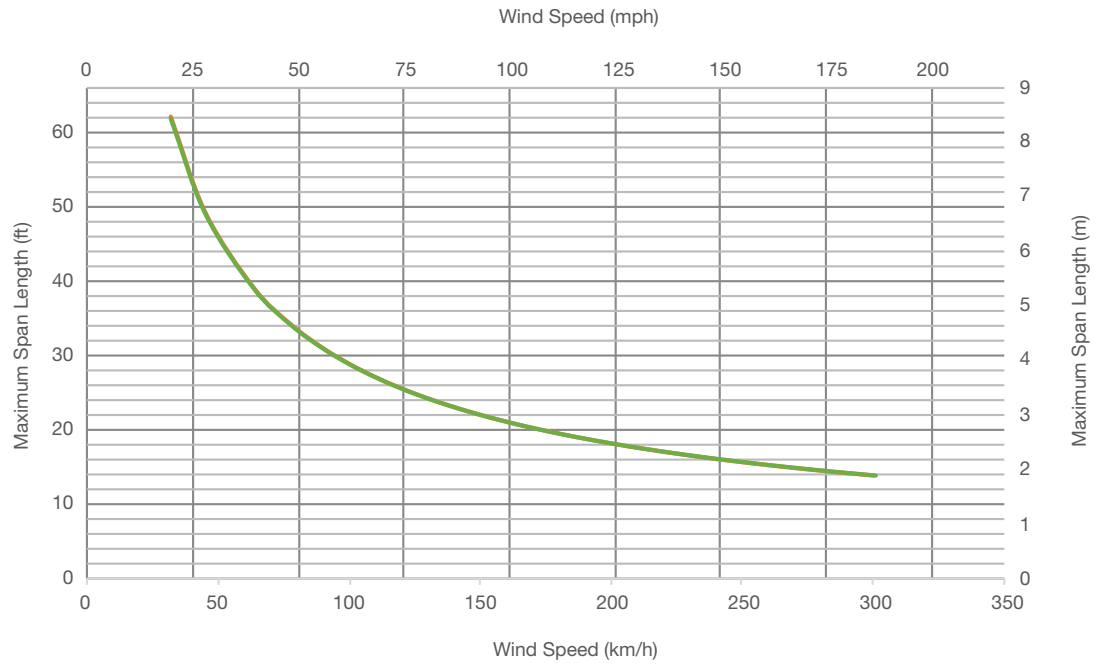
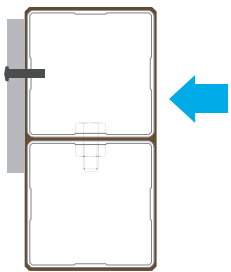


# Planeo 4044

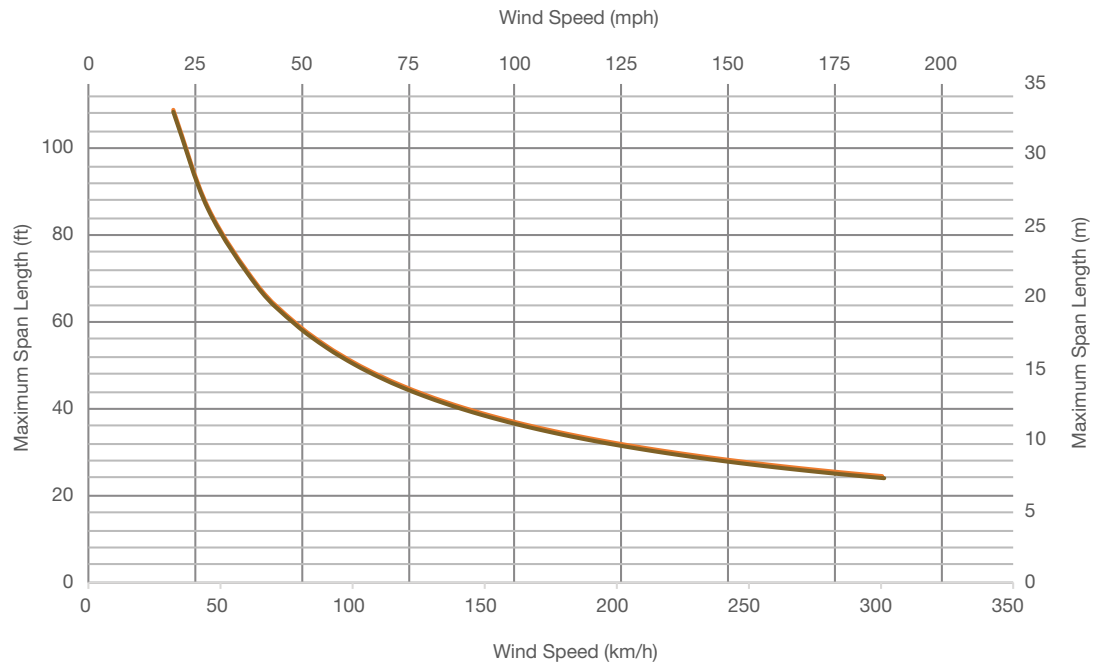
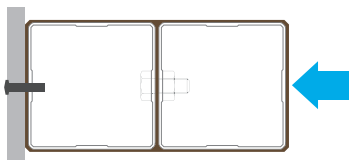


Dimensions	174 mm x 87 mm / 6 7/8" x 3 3/8"
Weight	4.52 kg/ml / 3.04 lb/ft
End Caps	No
Splices/Connectors	No

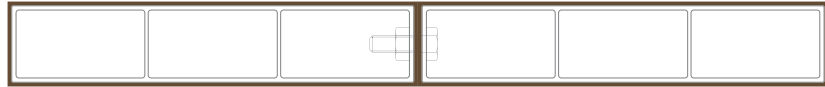
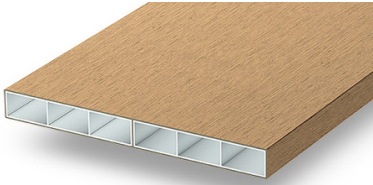
## Span length for wind on wide side



## Span length for wind on narrow side

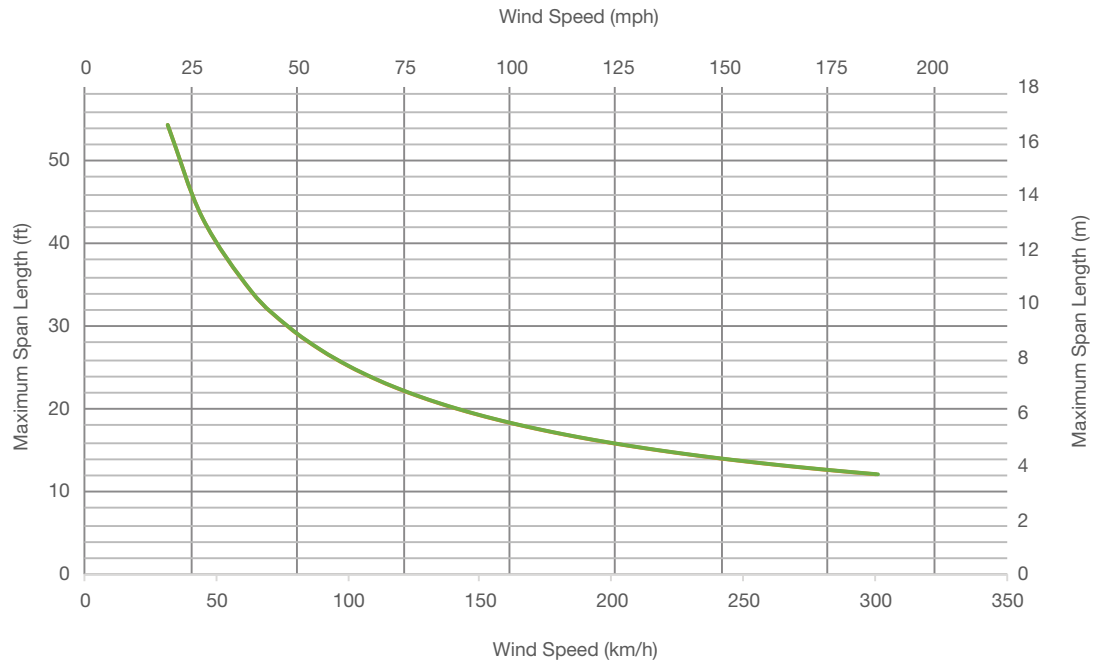
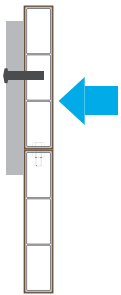


# Planeo 4123

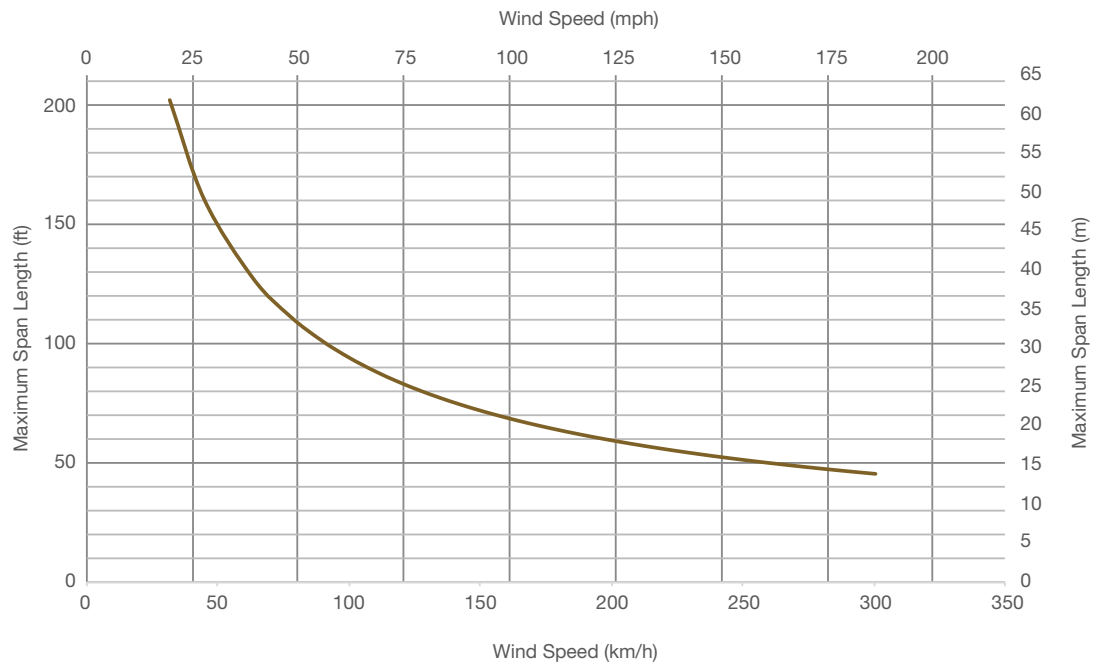
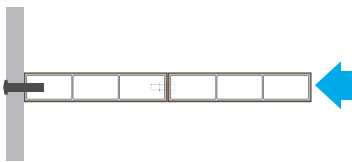


Dimensions	290 mm x 30 mm / 11 3/8" x 1 1/4"
Weight	3.74 kg/ml / 2.51 lb/ft
End Caps	No
Splices/Connectors	No

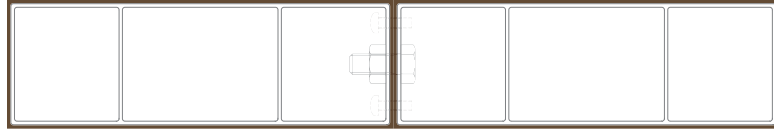
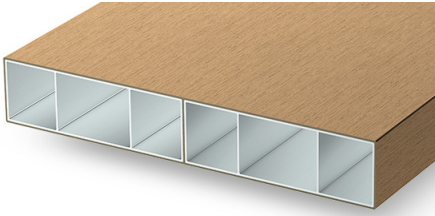
## Span length for wind on wide side



## Span length for wind on narrow side

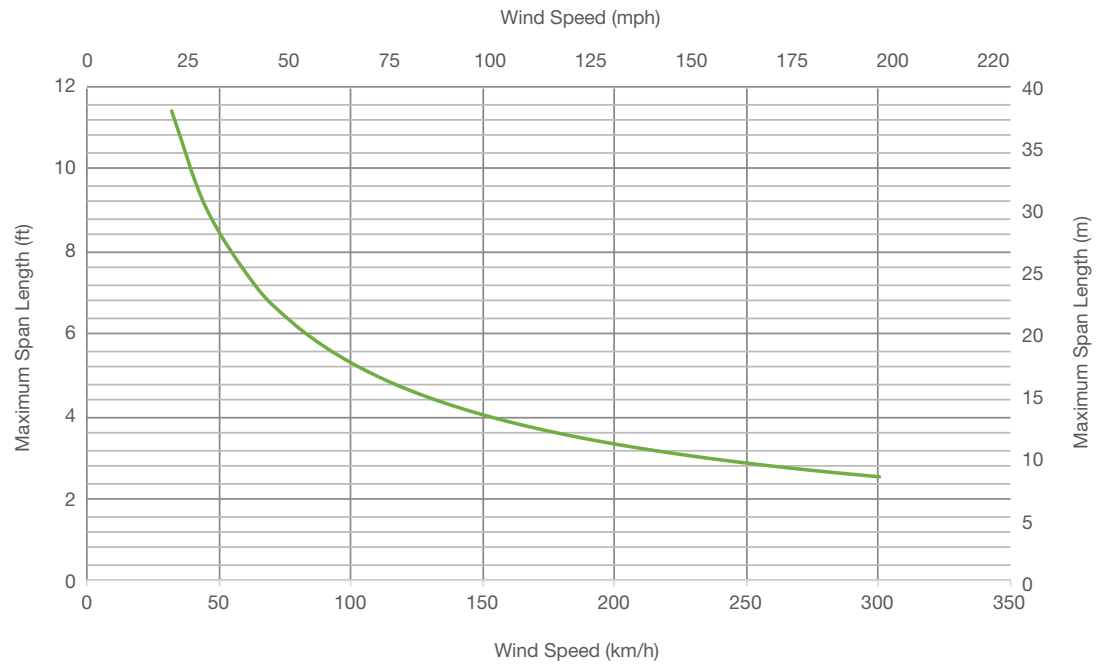
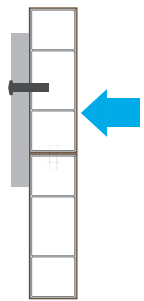


# Planeo 4048

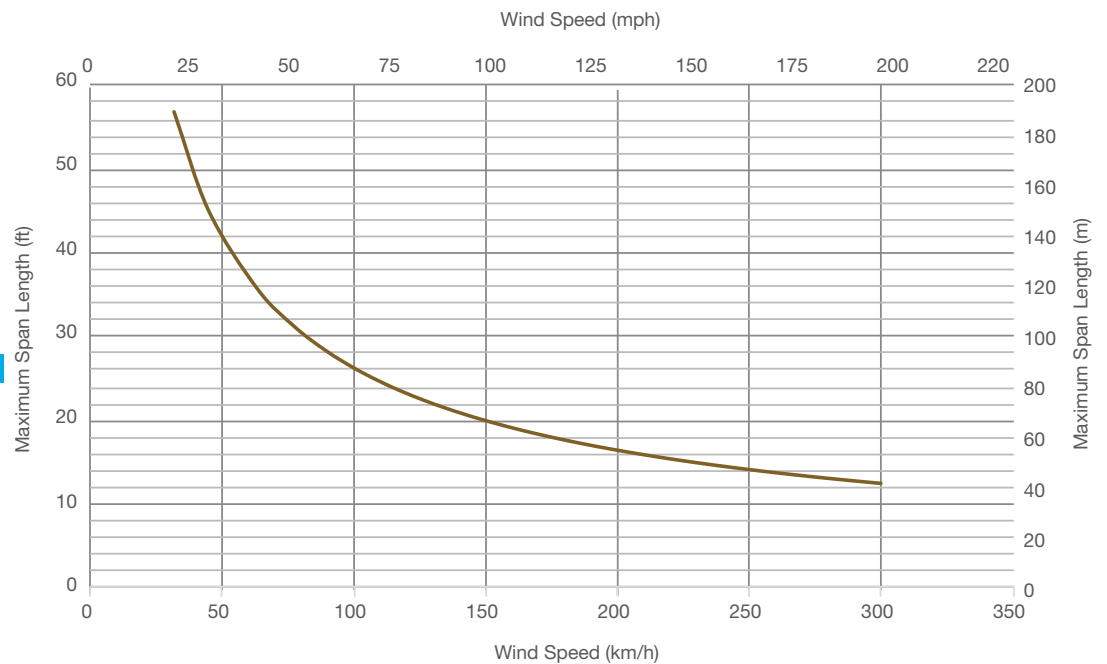
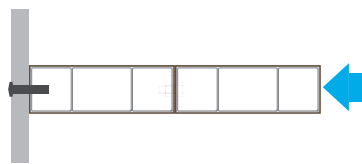


Dimensions	300 mm x 50 mm / 11 3/4" x 2"
Weight	4.80 kg/ml / 3.23 lb/ft
End Caps	No
Splices/Connectors	No

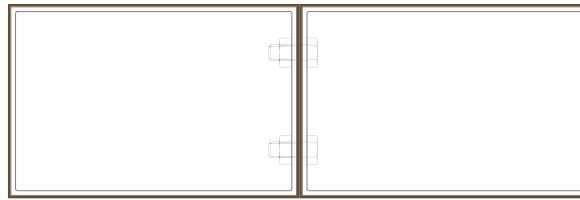
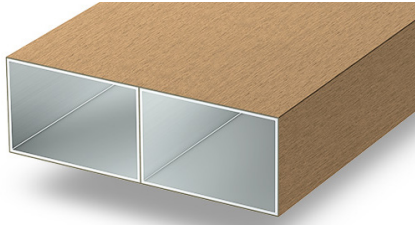
## Span length for wind on wide side



## Span length for wind on narrow side

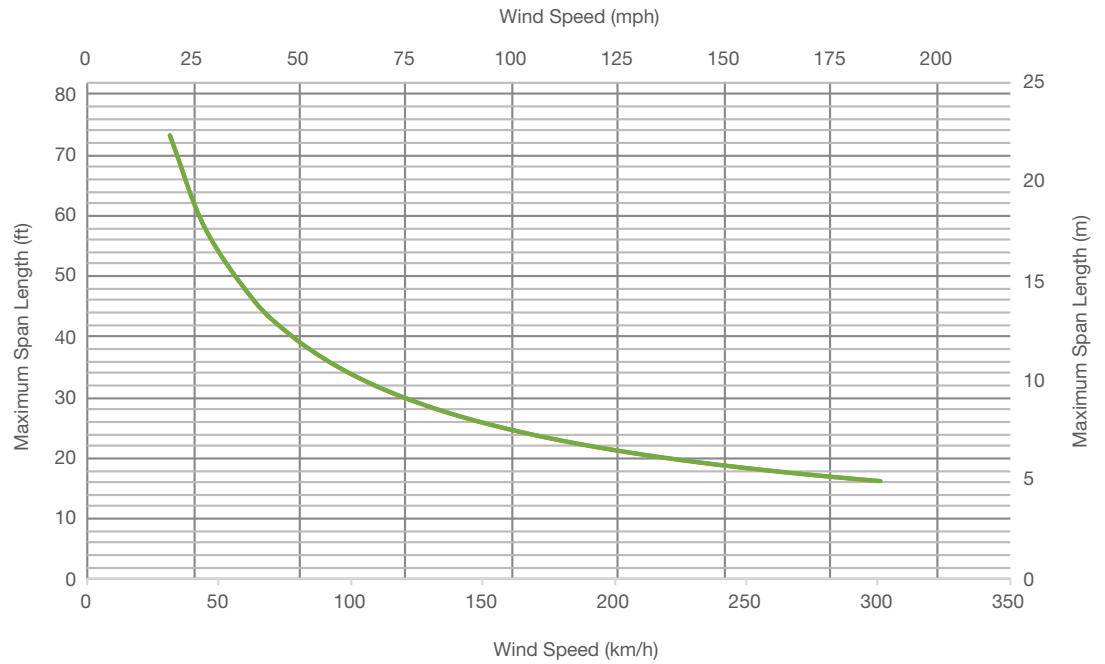
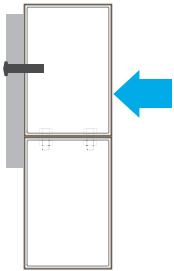


# Planeo 4061

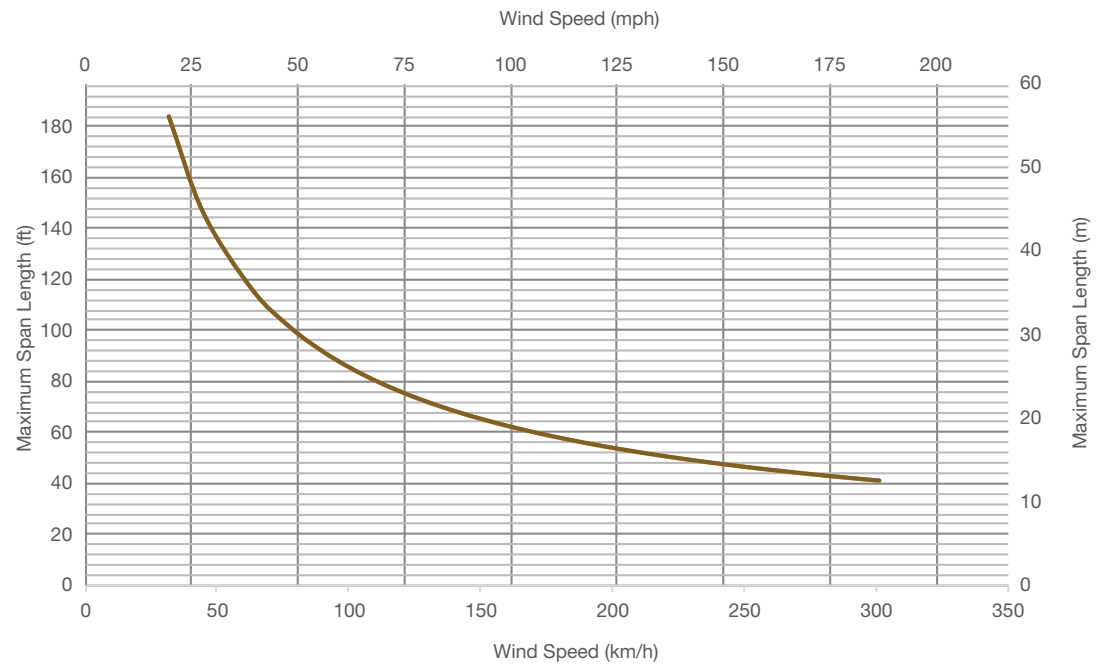
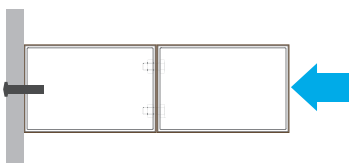


Dimensions	300 mm x 100 mm / 11 3/4" x 4"
Weight	9.50 kg/ml / 6.38 lb/ft
End Caps	No
Splices/Connectors	No

## Span length for wind on wide side

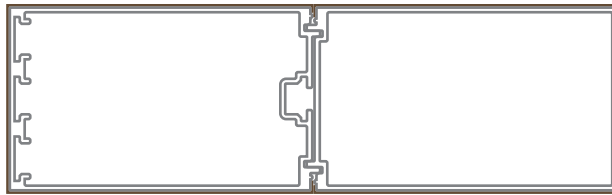


## Span length for wind on narrow side



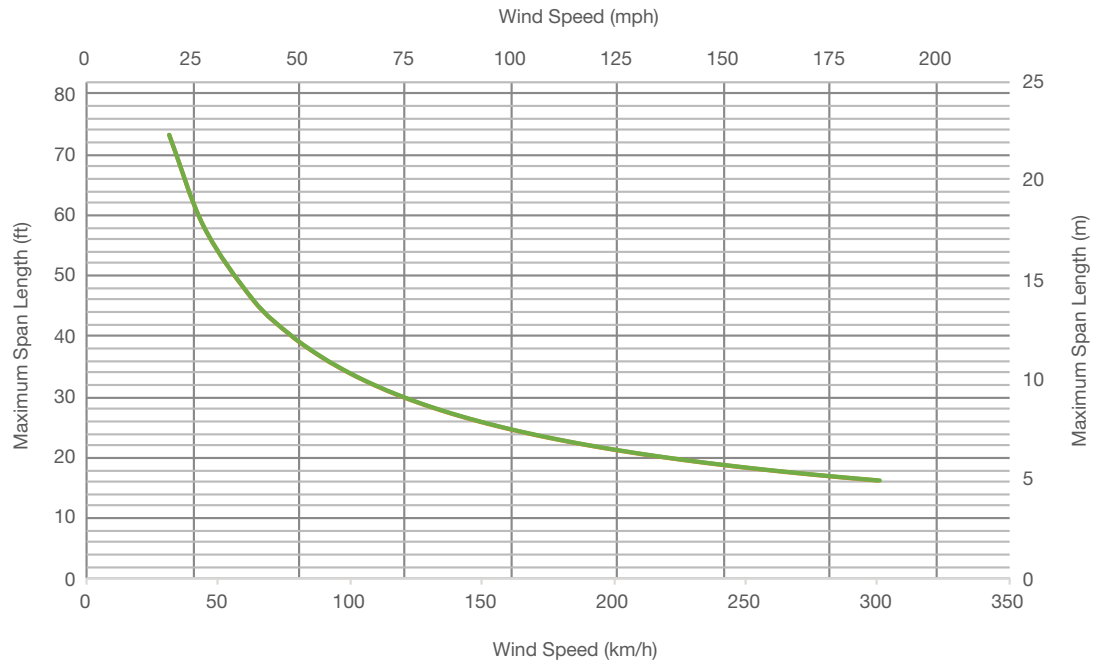
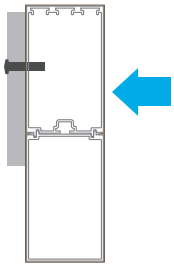


# Planeo 4046

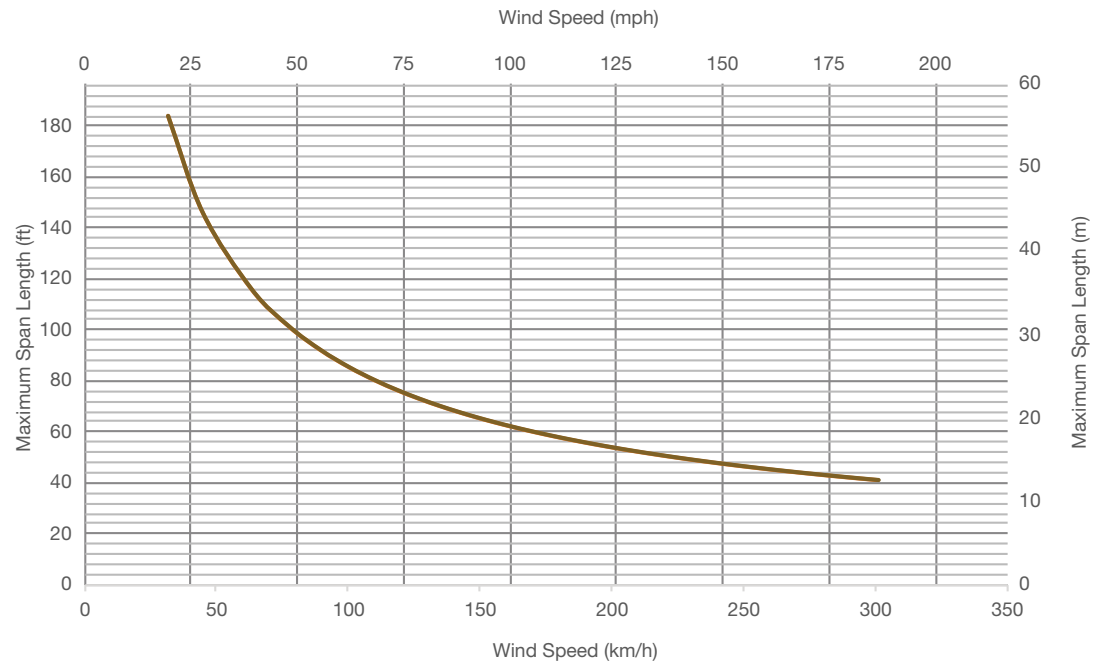
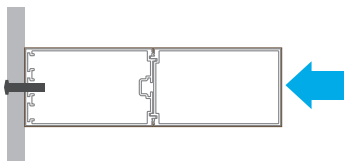


Dimensions	350 mm x 110 mm / 13 3/4" x 4 1/4"
Weight	9.90 kg/ml / 6.65 lb/ft
End Caps	No
Splices/Connectors	No

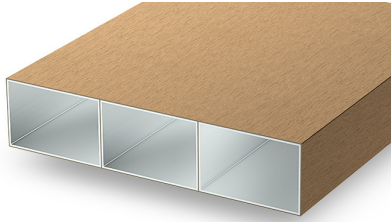
## Span length for wind on wide side



## Span length for wind on narrow side

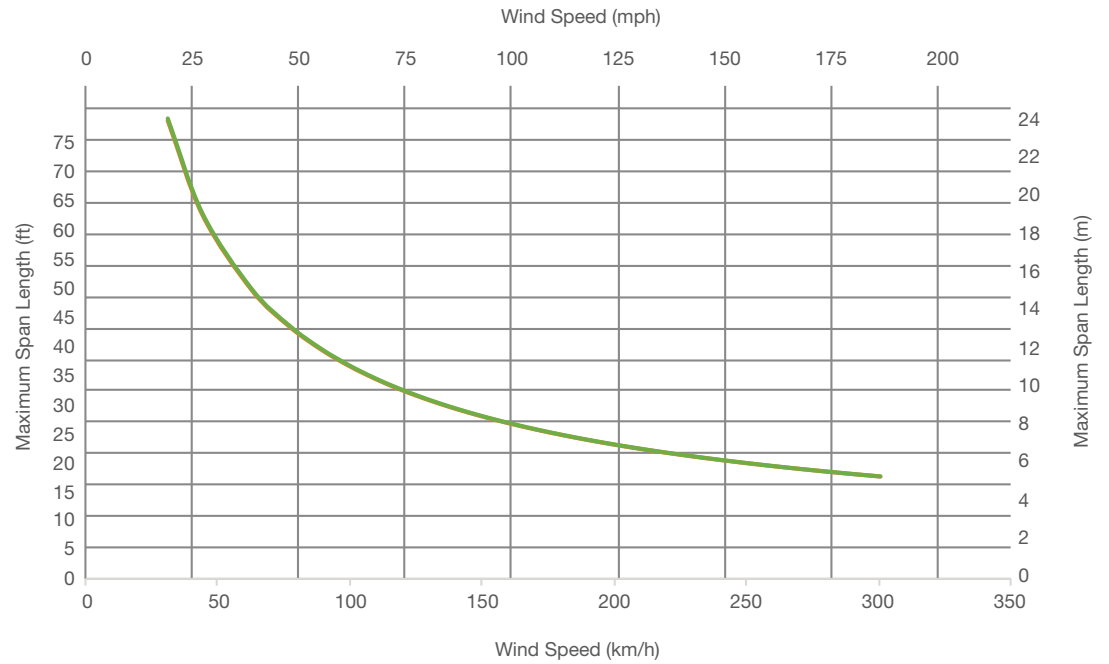
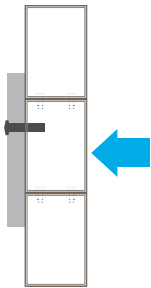


# Planeo 4062

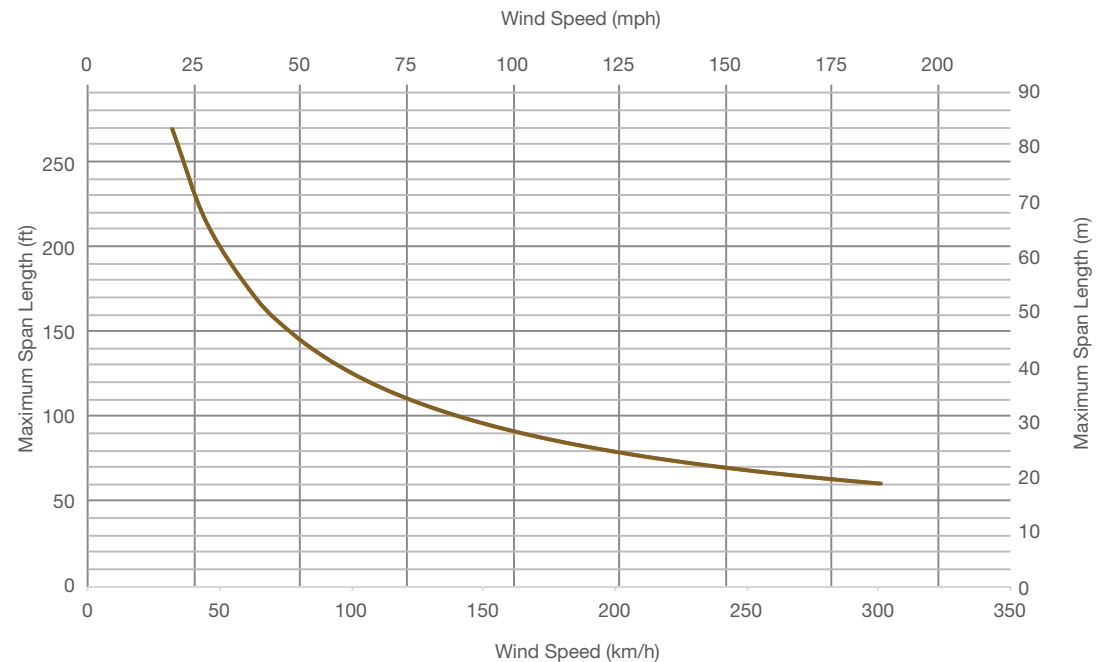
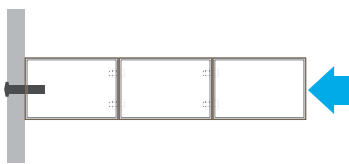


Dimensions	450 mm x 100 mm / 17 3/4" x 4"
Weight	14.25 kg/ml / 9.58 lb/ft
End Caps	No
Splices/Connectors	No

## Span length for wind on wide side



## Span length for wind on narrow side

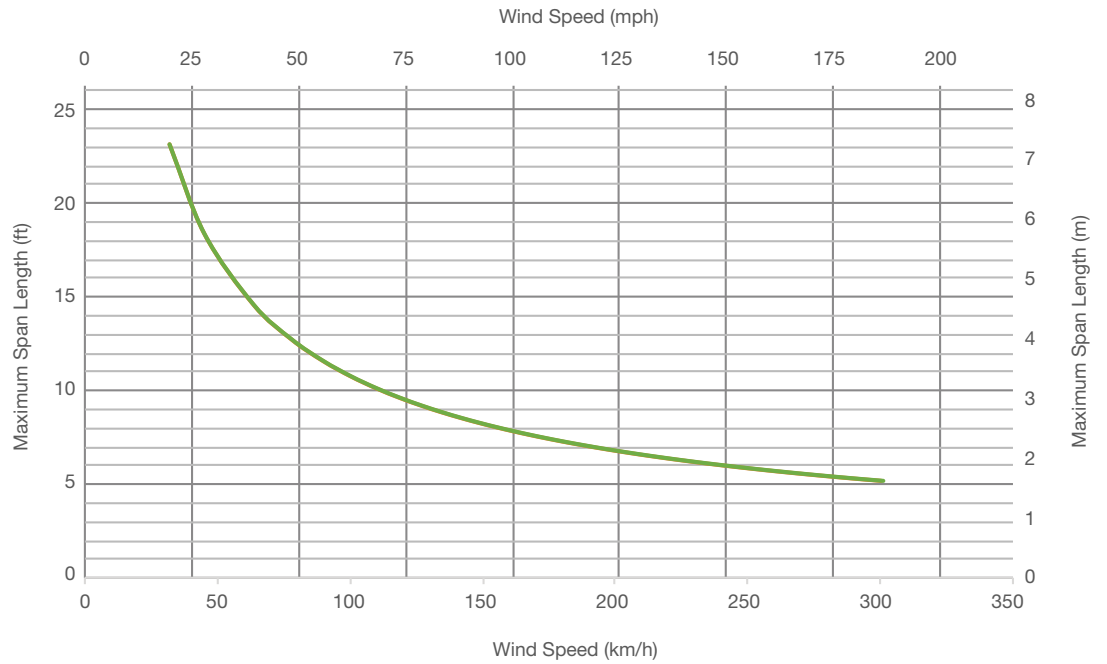
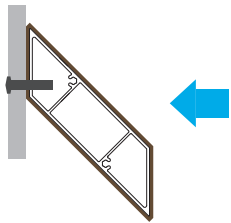


# Diameo 2018

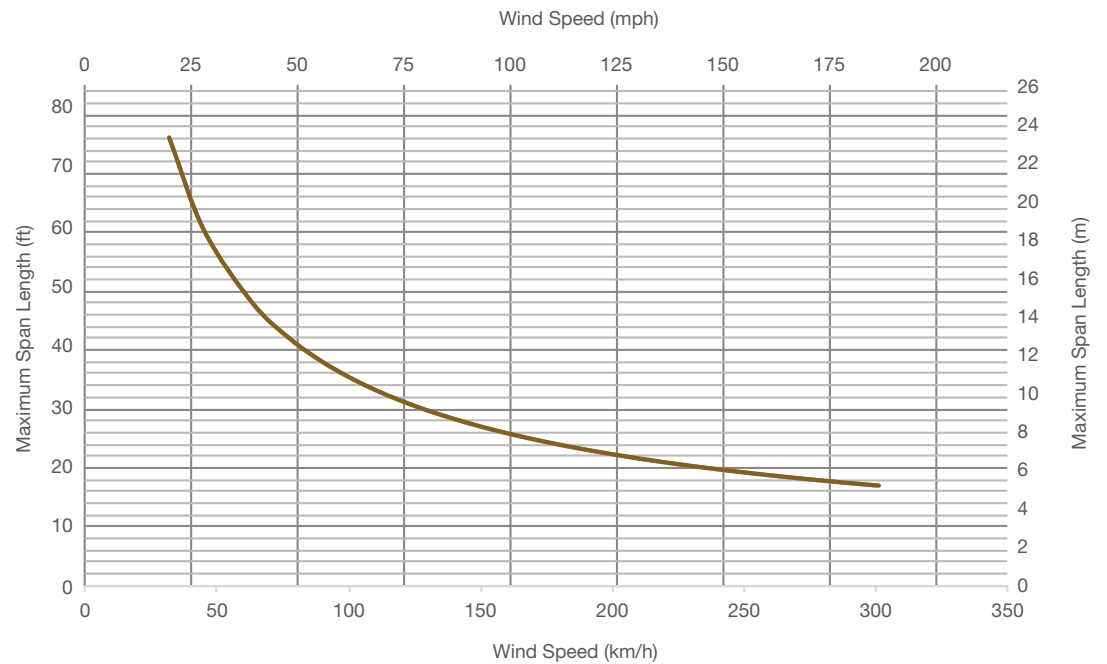
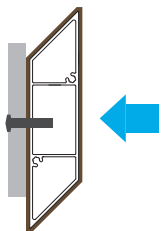


Dimensions	120 mm x 30 mm / 4 3/4" x 1 1/4"
Weight	1.42 kg/ml / 0.95 lb/ft
End Caps	Yes
Splices/Connectors	Yes

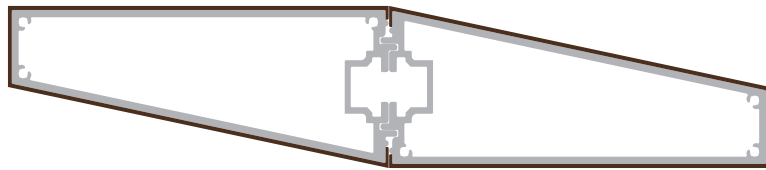
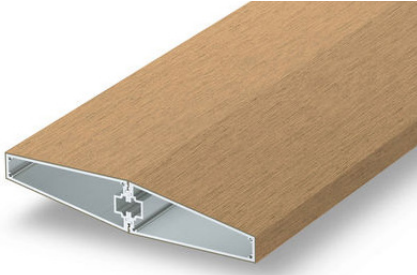
## Span length for wind on wide side



## Span length for wind on narrow side

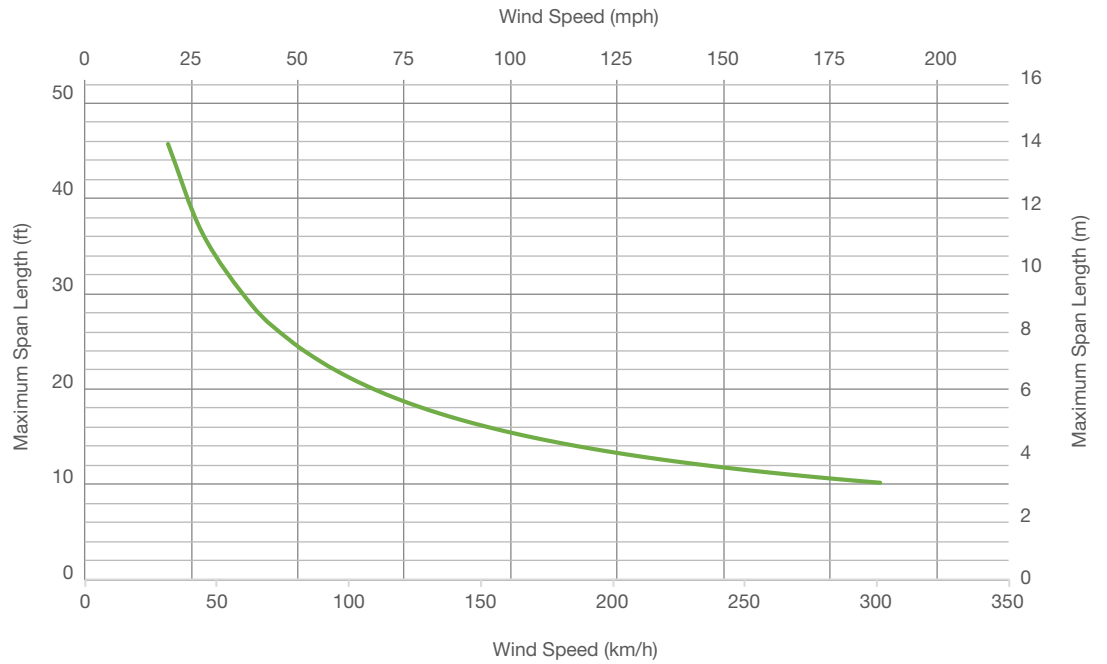
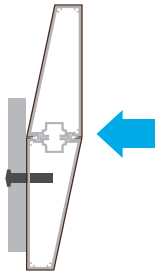


# Diameo 2023

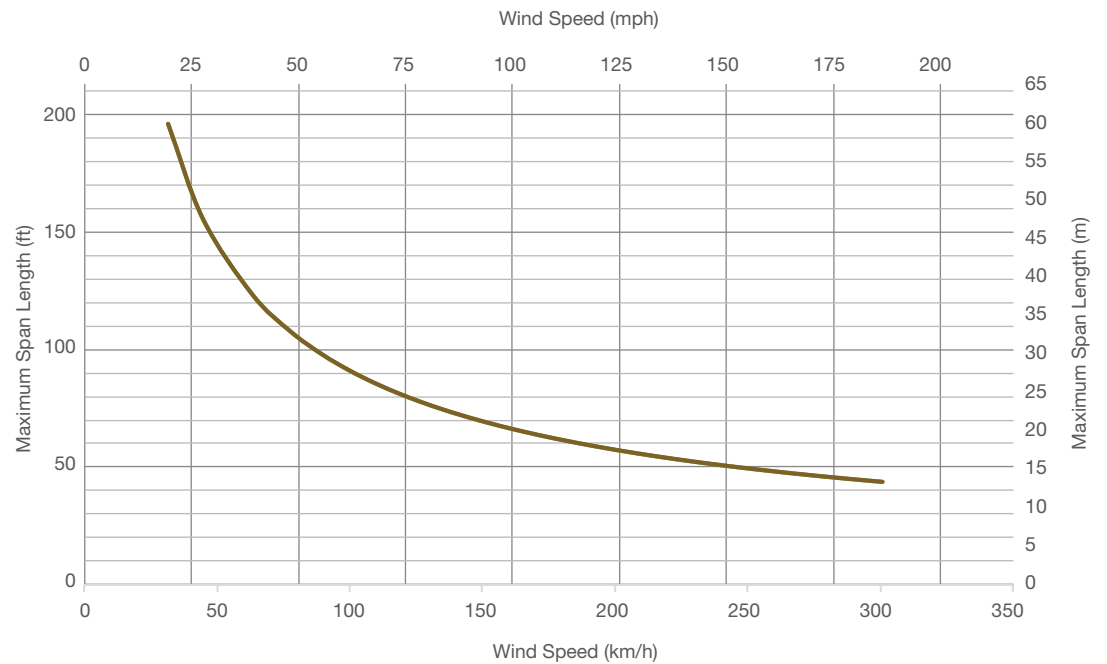
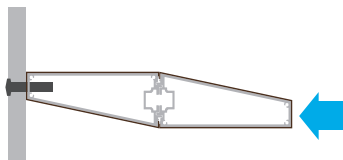


Dimensions	60 mm x 300 mm / 11 3/4" x 2 3/8"
Weight	7.43 kg/ml / 4.99 lb/ft
End Caps	No
Splices/Connectors	No

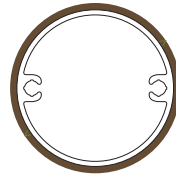
## Span length for wind on wide side



## Span length for wind on narrow side

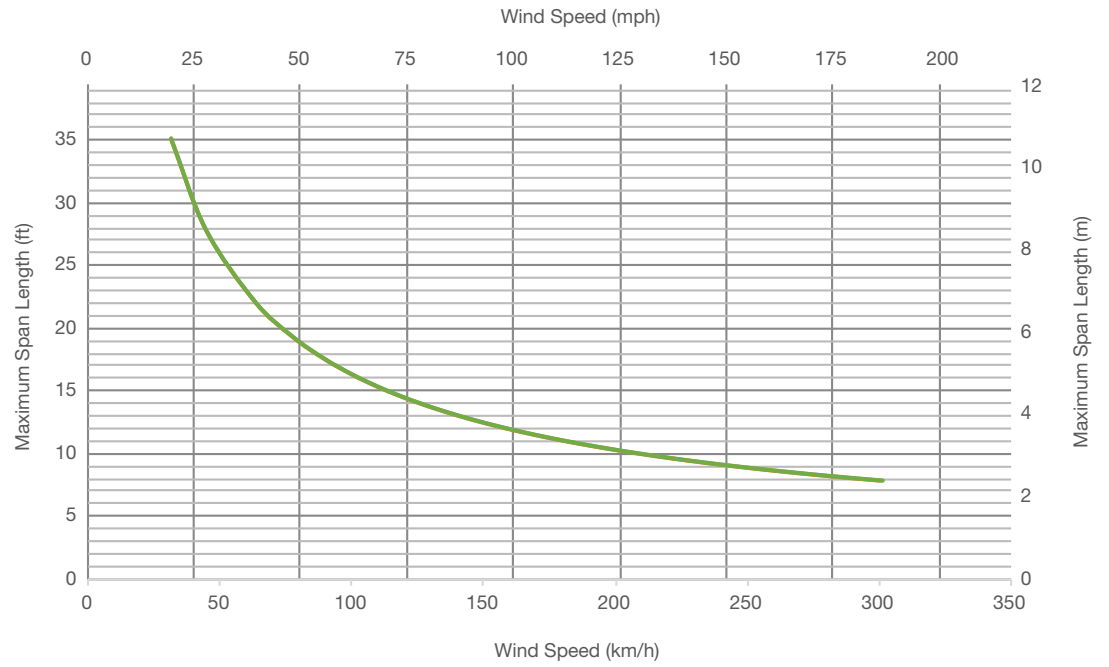
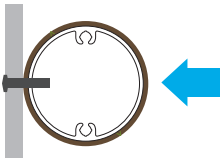


# Rondo 3002

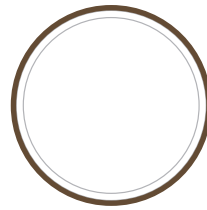


Dimensions	Diameter 50 mm / Diameter 2"
Weight	0.95 kg/ml / 0.64 lb/ft
End Caps	No
Splices/Connectors	No

## Span length for wind

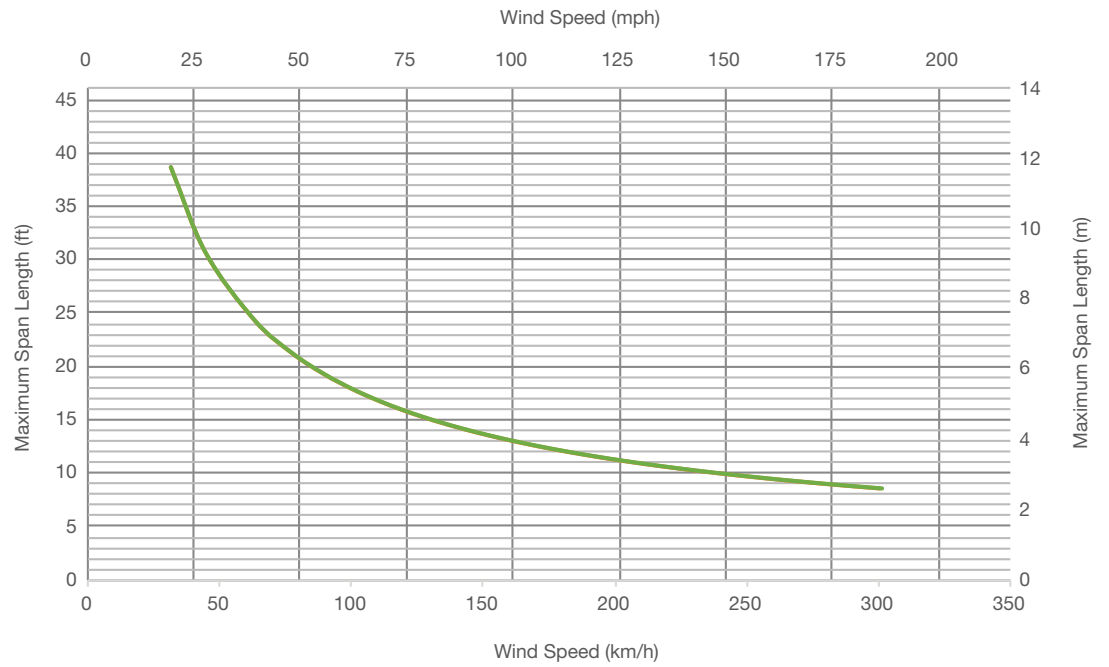
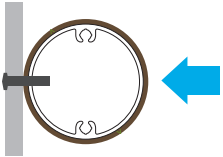


# Rondo 3003

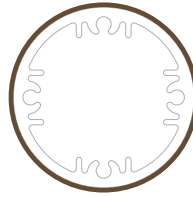
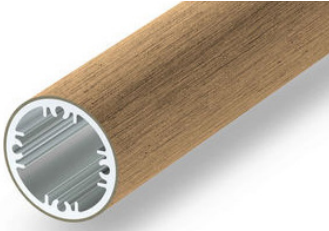


Dimensions	Diameter 56 mm / Diameter 2 1/4"
Weight	1.14 kg/ml / 0.77 lb/ft
End Caps	No
Splices/Connectors	No

## Span length for wind

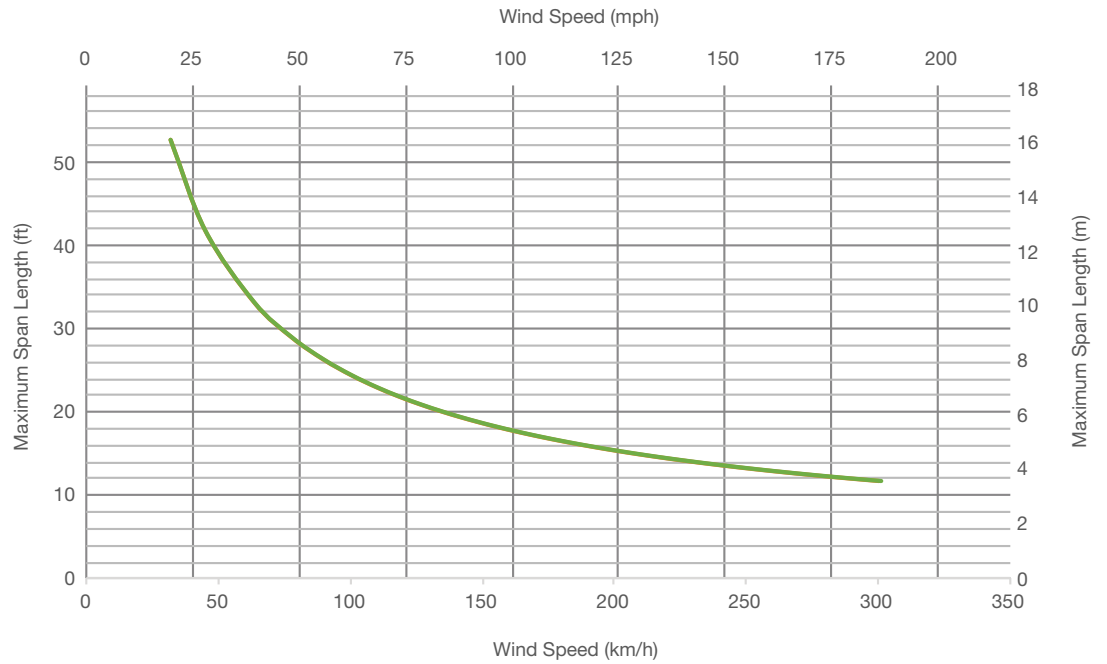
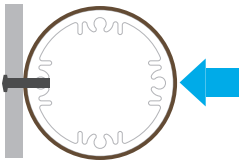


# Rondo 3004

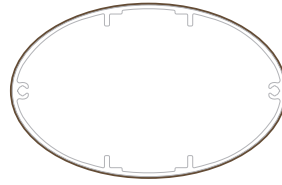


Dimensions	Diameter 63 mm / Diameter 2 1/2"
Weight	2.47 kg/ml / 1.66 lb/ft
End Caps	No
Splices/Connectors	No

## Span length for wind

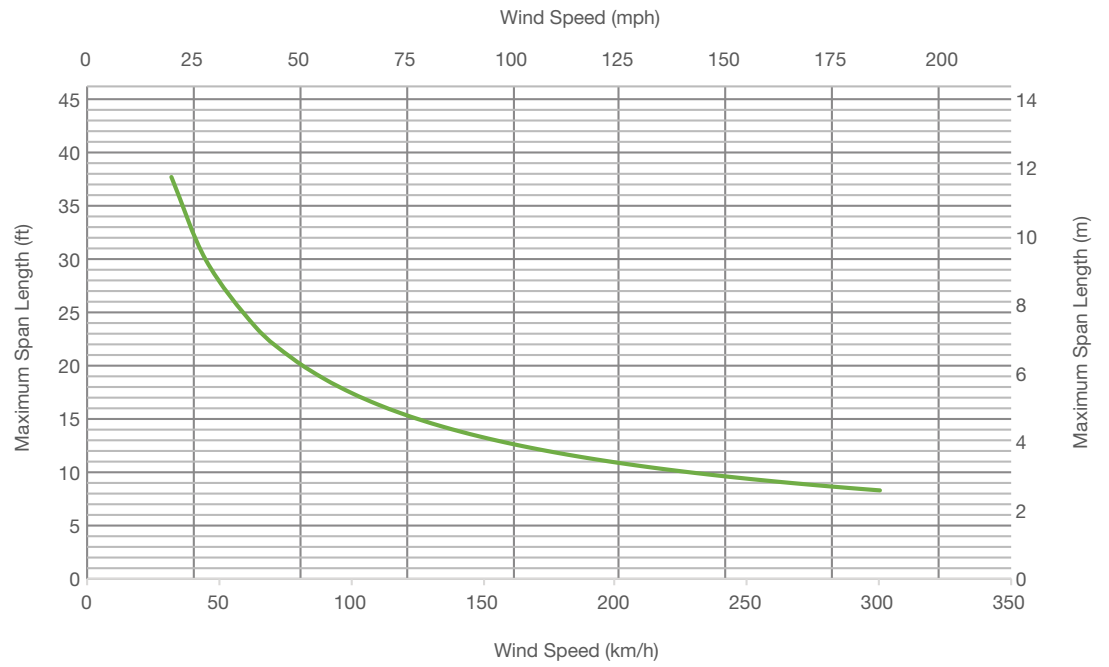
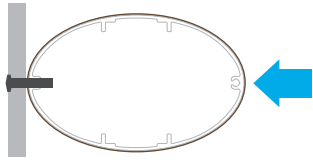


# Rondo 3006



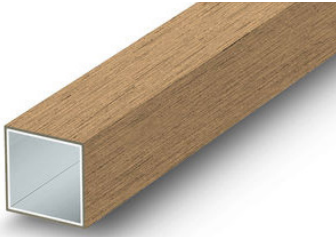
Dimensions	110 mm x 70 mm / 4 1/2" x 2 3/4"
Weight	1.72 kg/ml / 1.16 lb/ft
End Caps	No
Splices/Connectors	No

## Span length for wind



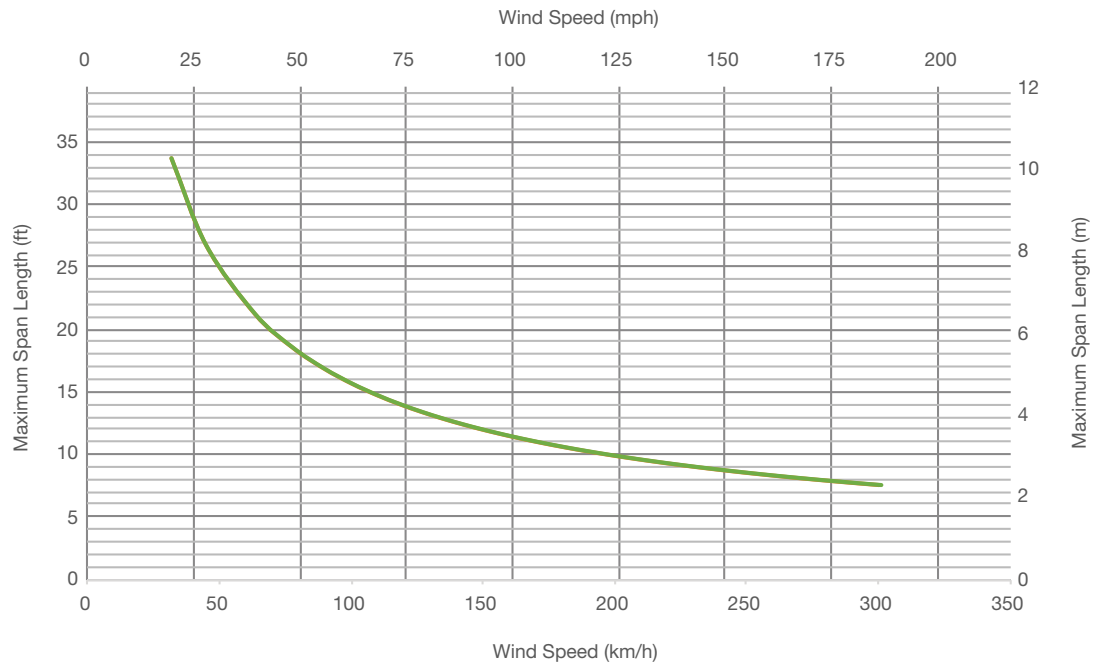
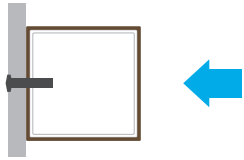


# Careo 7015

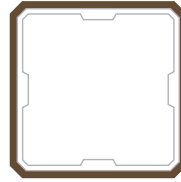
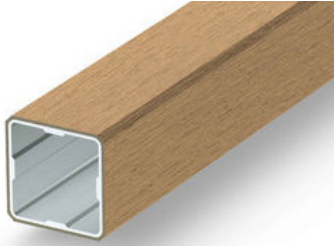


Dimensions	45 mm x 45 mm / 1 3/4" x 1 3/4"
Weight	0.82 kg/ml / 0.55 lb/ft
End Caps	No
Splices/Connectors	No

## Span length for wind

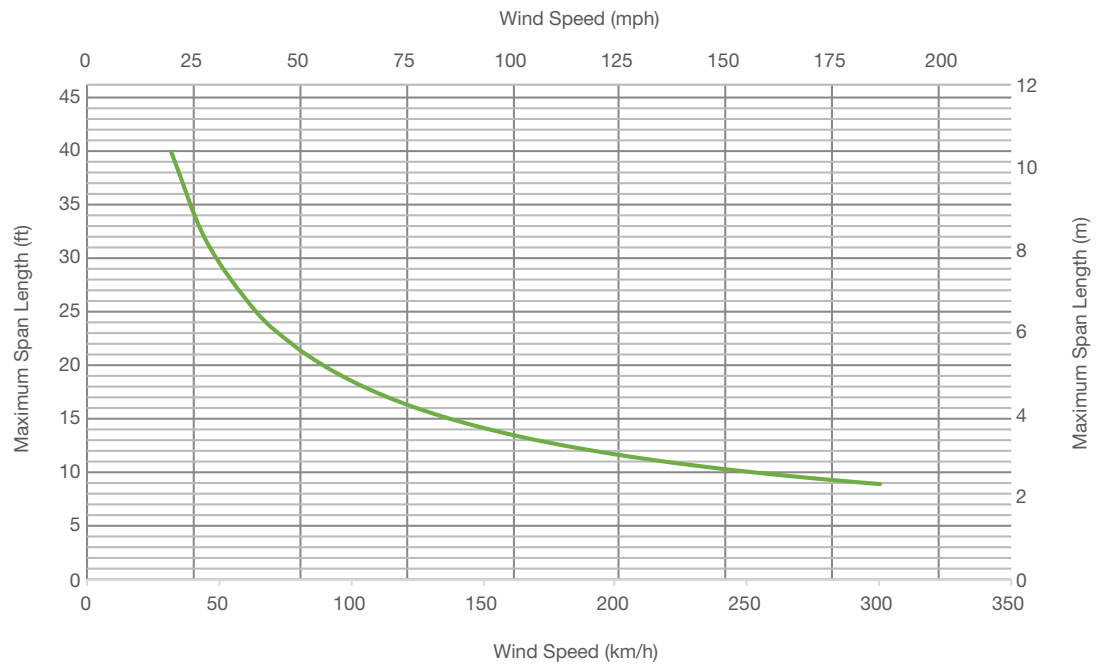
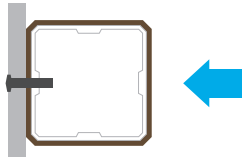


# Careo 7031

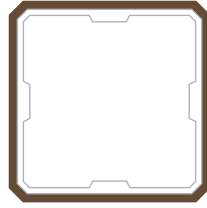


Dimensions	45 mm x 45 mm / 1 3/4" x 1 3/4"
Weight	0.82 kg/ml / 0.55 lb/ft
End Caps	No
Splices/Connectors	No

## Span length for wind

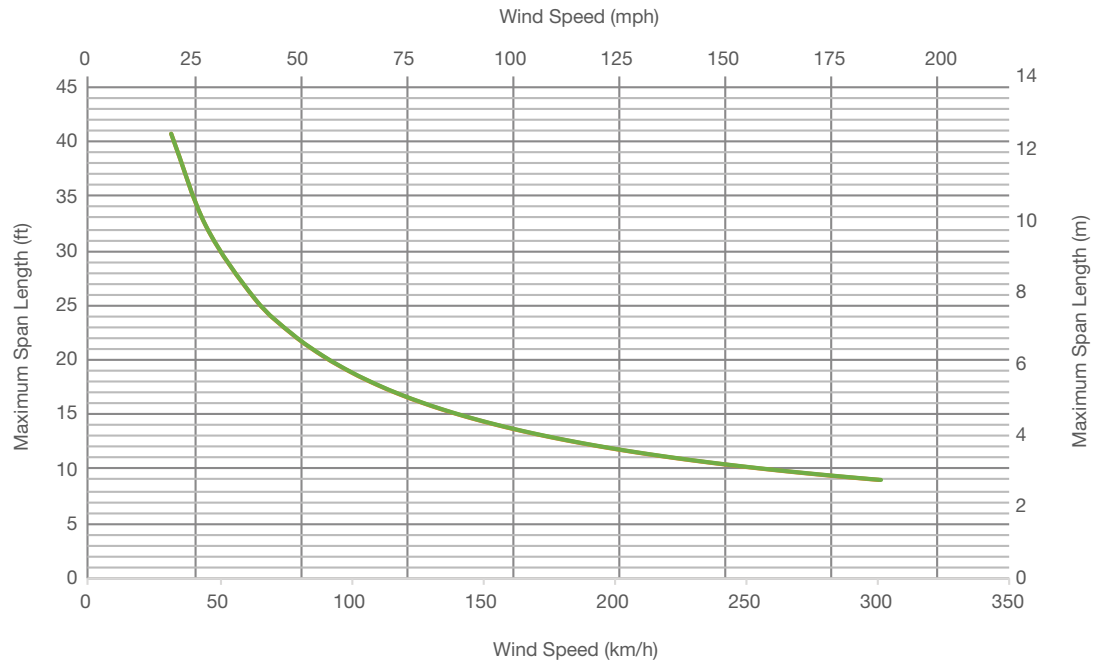
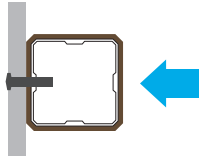


# Careo 7011

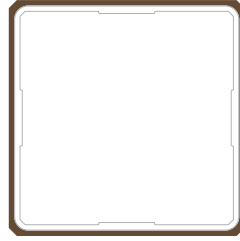


Dimensions	53 mm x 53 mm / 2 1/8" x 2 1/8"
Weight	1.34 kg/ml / 0.90 lb/ft
End Caps	No
Splices/Connectors	Yes

## Span length for wind

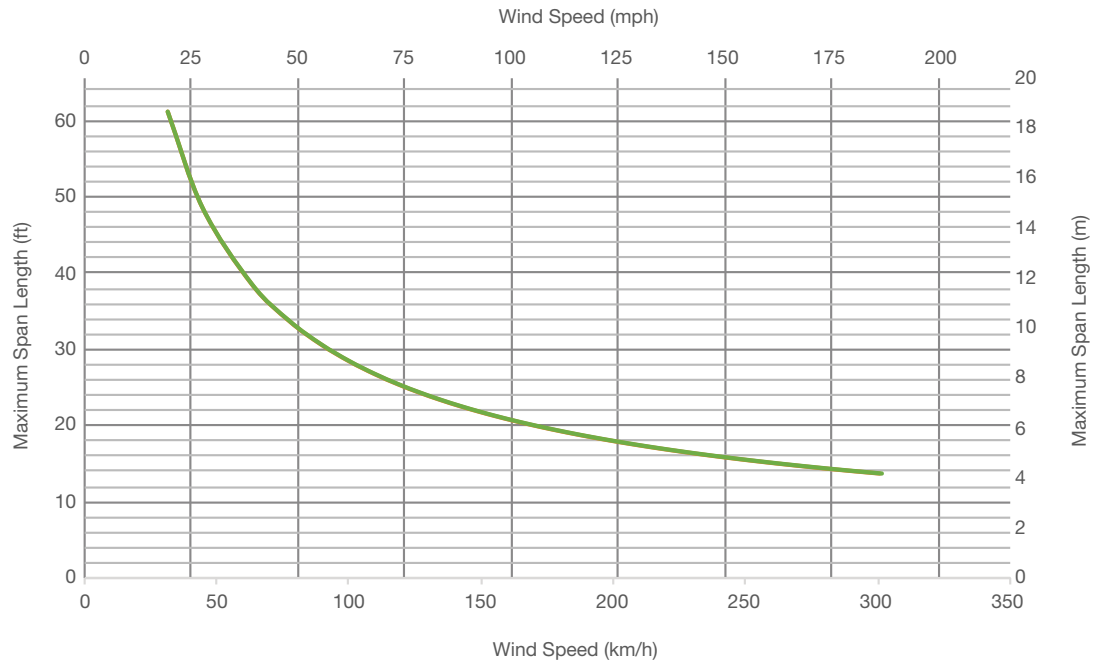
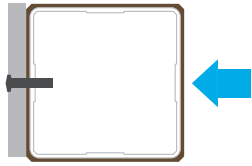


# Careo 7035



Dimensions	87 mm x 87 mm / 3 3/8" x 3 3/8"
Weight	2.28 kg/ml / 1.53 lb/ft
End Caps	No
Splices/Connectors	No

## Span length for wind

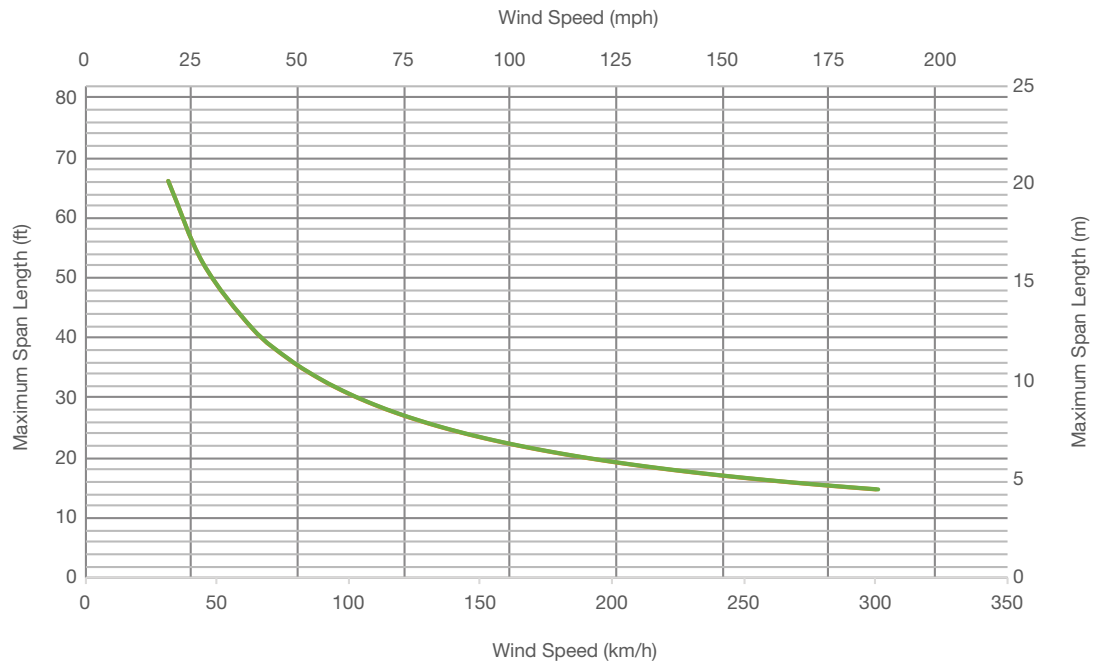
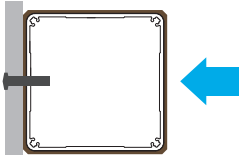


# Careo 7014



Dimensions	88 mm x 88 mm / 3 1/2" x 3 1/2"
Weight	2.80 kg/ml / 1.88 lb/ft
End Caps	Yes
Splices/Connectors	No

## Span length for wind

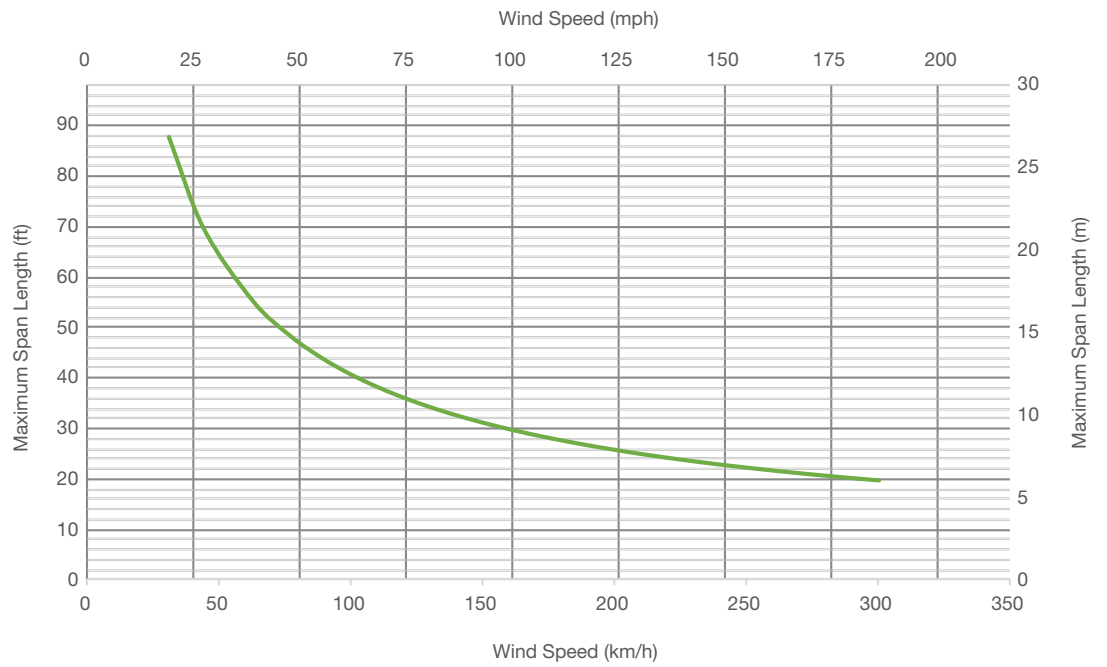


# Careo 7016



Dimensions	120 mm x 120 mm / 4 3/4" x 4 3/4"
Weight	4.00 kg/ml / 2.69 lb/ft
End Caps	No
Splices/Connectors	No

## Span length for wind

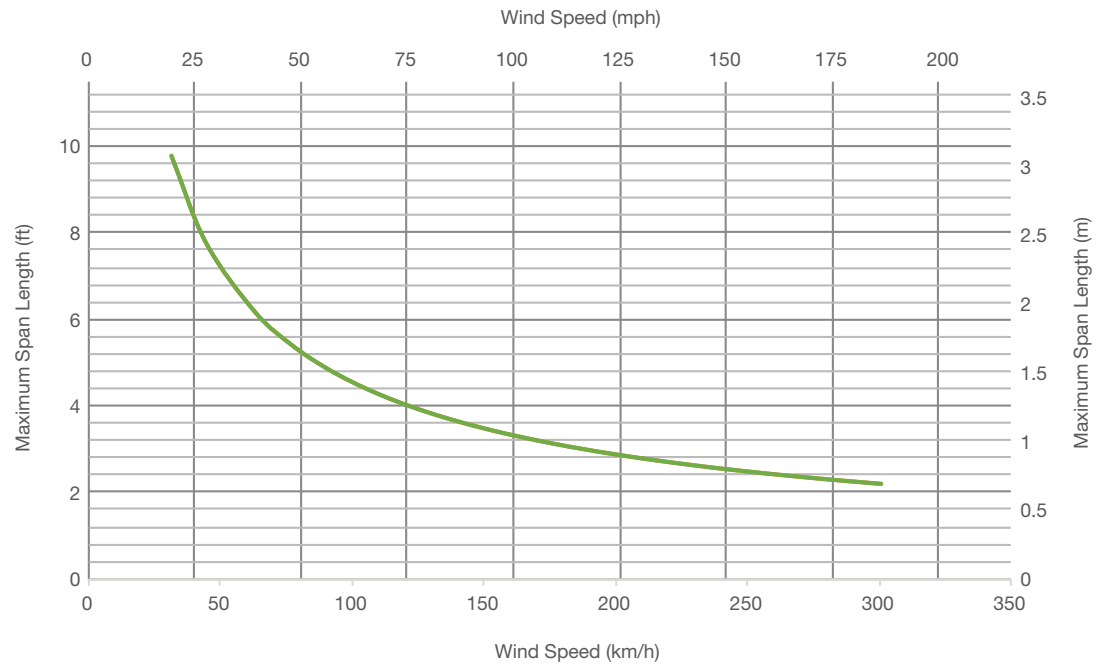
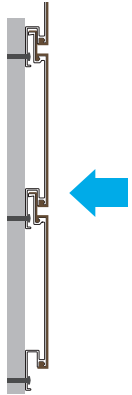


# Vertigo 5011



Dimensions	130 mm x 13 mm / 5 1/8" x 1/2"
Weight	0.77 kg/ml / 0.52 lb/ft
End Caps	No
Splices/Connectors	No

## Span length for wind

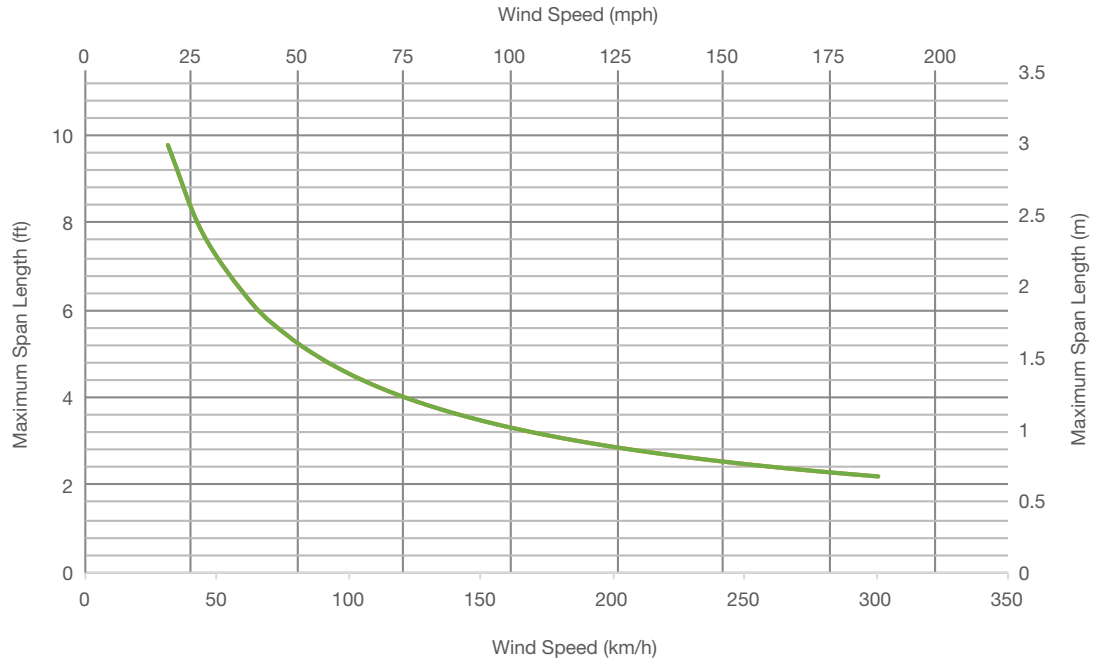
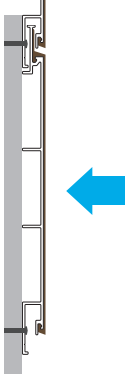


# Vertigo 5010



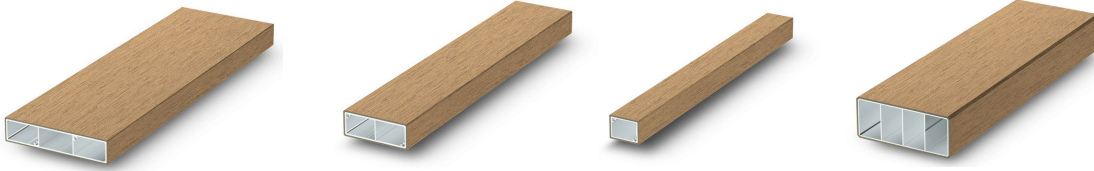
Dimensions	184 mm x 13 mm / 7 1/4" x 1/2"
Weight	1.19 kg/m <sup>2</sup> / 0.80 lb/ft <sup>2</sup>
End Caps	No
Splices/Connectors	No

## Span length for wind





# Architectural Elements



**SOLEO** - 18 PROFILES



**PLANEO** - 8 PROFILES



**DIAMEO** - 1 PROFILE



**RONDO** - 4 PROFILES



**CAREO** - 6 PROFILES

---

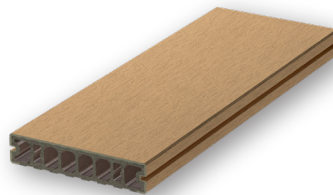
## Cladding/Soffit



**VERTIGO** - 2 PROFILES

---

## Commercial Decking



**QUALITA** - 2 PROFILES

To learn more about the advantages of Geolam<sup>®</sup>, our complete product line, or for any other information, please visit our website or contact us at any time.

[www.geolaminc.com](http://www.geolaminc.com)

Toll free: 1-877-627-3530 • [info@geolaminc.com](mailto:info@geolaminc.com)

**Geolam**<sup>®</sup>  
Architectural Eco-Technology